



ALHAMRA

RAS AL KHAIMAH REIMAGINED



WALDORF ASTORIA®
RESIDENCES • RAS AL KHAIMAH

والدورف أستوريا ريزيدنسز رأس الخيمة

EXPERIENCE THE ALLURING ELEGANCE

Where a refined haven
weaves into the elegant tapestry
of its iconic destination



WALDORF ASTORIA®
RESIDENCES • RAS AL KHAIMAH

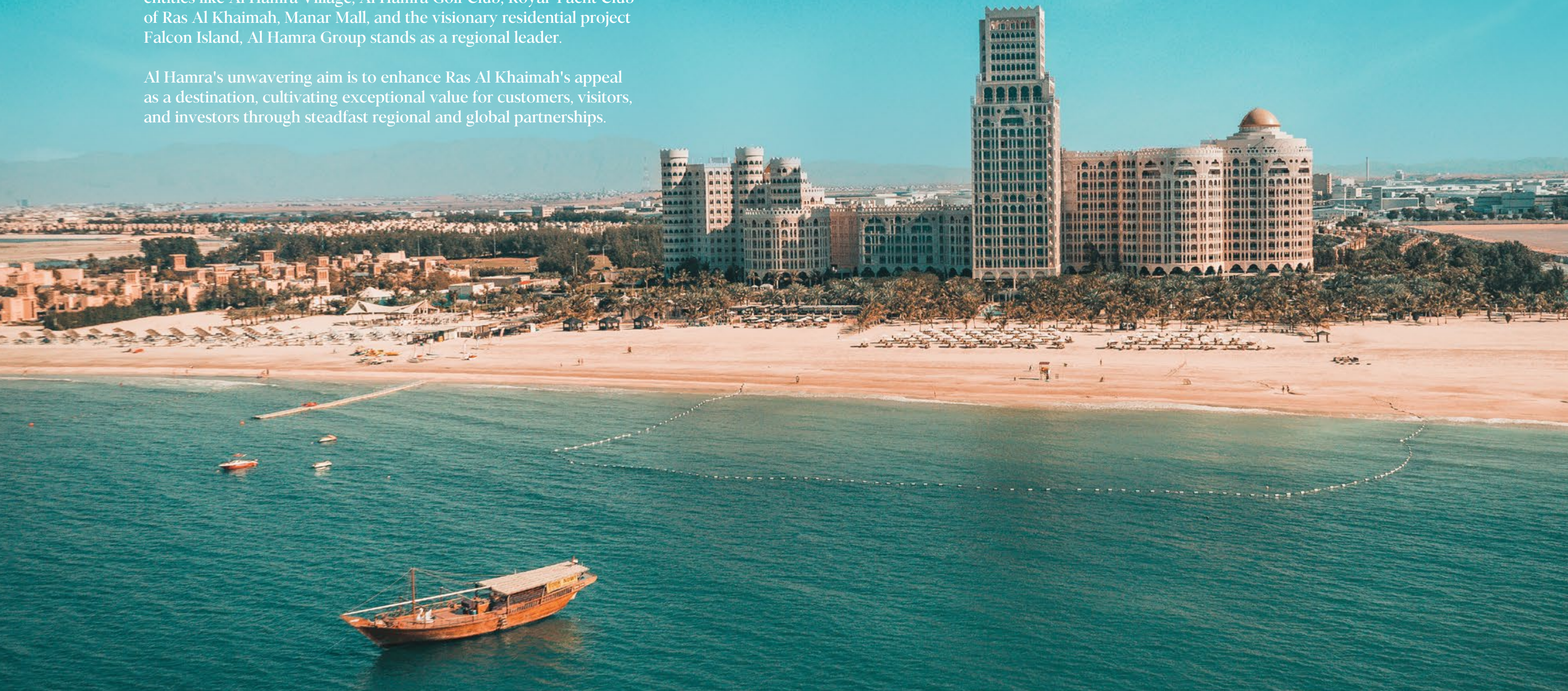
ABOUT RAS AL KHAIMAH

Discover an enchanting haven that embodies the epitome of authentic Arabian hospitality. Ras Al Khaimah, with its awe-inspiring natural landscapes, untouched beaches, and opulent cultural heritage, presents an unparalleled fusion of adventure, extravagance, and serenity. Committed to sustainable tourism and the preservation of its untouched splendor, Ras Al Khaimah stands as the paramount choice for astute travelers in pursuit of an indelible lifestyle experience.

AL HAMRA

A respected name with a far-reaching vision - Al Hamra, is a prestigious and influential conglomerate driving the evolution of Ras Al Khaimah into the foremost lifestyle destination. With renowned entities like Al Hamra Village, Al Hamra Golf Club, Royal Yacht Club of Ras Al Khaimah, Manar Mall, and the visionary residential project Falcon Island, Al Hamra Group stands as a regional leader.

Al Hamra's unwavering aim is to enhance Ras Al Khaimah's appeal as a destination, cultivating exceptional value for customers, visitors, and investors through steadfast regional and global partnerships.





EVOKE YOUR SENSES

Imagine waking up to stunning scenery of the crystal-clear ocean and unobstructed views of Al Marjan Island and the region's first gaming establishment, the iconic Wynn Resort.

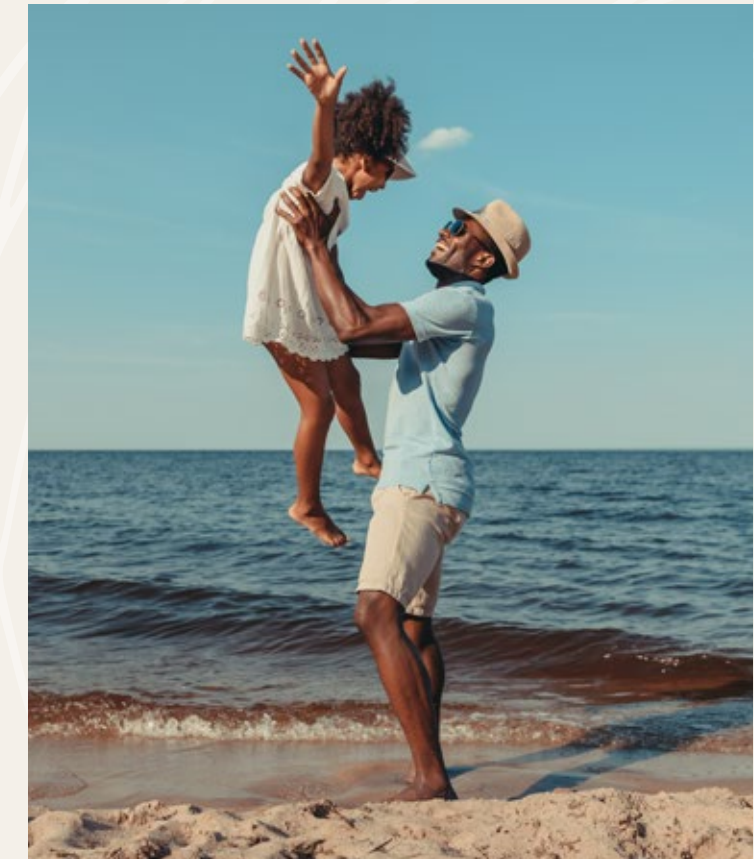
From your private balcony, witness nature's ever-changing canvas as the sky transforms into vibrant hues. These views ignite a sense of serenity as a reminder to pause, breathe and appreciate the beautiful surroundings.



A DESTINATION OF LIFESTYLE

Experience a destination within a destination at Al Hamra, where a vibrant lifestyle and exceptional leisure amenities beckon. Set against the majestic backdrop of the Hajar Mountains and the captivating Arabian Gulf, partake in a round of golf at the prestigious Al Hamra Golf Club, and immerse yourself in the rich sailing heritage at the esteemed Royal Yacht Club of Ras Al Khaimah.





A BUSTLING SYMBOL OF LIFE

Al Hamra is designed to emerge as a vibrant haven for discerning residents and visitors alike. Dive into a world of watersports, beachfront activities, and exclusive sailing lessons at the prestigious Royal Yacht Club of Ras Al Khaimah. Indulge in epicurean delights at your fingertips, including the acclaimed Lexington Grill, Azure, and Umi at the Waldorf Astoria. The community's latest addition, Al Hamra boardwalk is poised to evolve into a bustling hub for an active lifestyle.

AL HAMRA'S CROWN JEWEL

Nestled like a precious gem in the heart of its destination, Waldorf Astoria Ras al Khaimah reigns as the crown jewel of sophisticated hospitality. This exquisite resort showcases unparalleled beauty and elegance, captivating travelers from near and far.



ICONIC ELEGANCE

With its breathtaking architecture, sincerely elegant service, and unparalleled amenities, Waldorf Astoria Ras al Khaimah stands as an epitome of refined elegance. A beacon on the horizon of Ras al Khaimah, it assures an extraordinary experience for the most discerning of guests, setting a new standard as an ultimate host with charm & sophistication.



THE ART OF INDULGENCE

Elevating your stay is an extraordinary journey of entertainment and culinary excellence with nine meticulously curated restaurants, lounges, and bars. Immerse yourself in the artistry of Japanese cuisine at the esteemed UMI, indulge in the finest cuts at the American-style steakhouse Lexington Grill & Bar, and partake in a singular experience at Ras Al Khaimah's premier cigar bar, Sijar Lounge.





THE HERITAGE MASTERPIECE

Nestled proudly in the center of its lobby, the reimagined six-meter clock at Waldorf Astoria Ras al Khaimah commands attention with its bold presence. Enhancing its allure, the clock proudly bears an inscription from ancient Bedouin songs, signifying a profound link to the region's rich cultural heritage. This remarkable timepiece stands as a testament to the meticulous attention to detail and the seamless fusion of tradition and modernity, embodying the hotel's commitment to culture & sophistication.

SENSE THE ASCENDANCE

The arrival at Waldorf Astoria Residences – Ras Al Khaimah is a captivating immersion into alluring sophistication. Every element, from the meticulously landscaped driveway to the elegant lobby, exudes opulence and exclusivity. The attentive valet service and devoted concierge ensure a seamless transition into your new sanctuary, setting the stage for an extraordinary living experience that epitomizes true elegance.



BEYOND THE DETAILS

Exquisitely designed with modern fittings and contemporary finishes. Every detail is carefully considered, from the plush furnishings to the polished marble floors and sleek fixtures. The result is a space that exudes sophistication and elegance while seamlessly blending timeless charm with modern aesthetics.

RESIDENCE FEATURES:

- Meticulously furnished 2, 3, 4 and 5 Bedrooms residences
- Floor-to-ceiling windows & terraces with stunning views of the Arabian Gulf and Al Marjan Island
- Contemporary custom cabinetry finished in both fine wood veneers and lacquer with State-of-the-art integrated appliances
- Bathrooms with top-of-the-line fixtures and adorned with custom marble finishes.
- High-end smart system to control lights, AC, and curtains, with user-friendly voice control interface.
- Spacious walk-in closets and wardrobes in all residences
- Pre-wired for high-speed communications
- Private lobby and dedicated elevators for the residences
- Accessible and elderly-friendly design
- Pet-friendly residences and facilities for furry loved ones

ARTFULLY CURATED INTERIORS

Thoughtfully curated interiors define Waldorf Astoria Residences – Ras Al Khaimah. As you step inside, you are enveloped by a harmonious blend of colors, textures, and patterns that exude refined elegance. Intricate lighting, sumptuous furnishings, and carefully selected art pieces converge to create a grand yet inviting living space.

The exclusive number of residences boast designer appointed features that establish new benchmarks in branded residential living, setting a standard of opulence and sophistication.





CONSCIOUSLY CURATED

As you venture through the living spaces, you will encounter a flawless fusion of form and function, epitomizing the pinnacle of Art Deco charm. Meticulously chosen materials guarantee timeless beauty and enduring timeless durability, while the deliberate design maximizes both comfort and practicality.

These residences stand as the quintessence of sophisticated living at its most exquisite, offering an unparalleled standard of elegance that is further elevated by the presence of curated branded furnishings and furniture pieces, ensuring an experience of unrivaled refinement and grandeur.





















WALDORF ASTORIA®
RESIDENCES • RAS AL KHAIMAH

والدورف أستوريا ريزيدنسز رأس الخيمة

AMENITIES

COASTAL VISTA LOUNGE

Situated on the 16th floor and presenting awe-inspiring ocean vistas and captivating sunsets, this space invites you to immerse yourself in the enchantment of coastal living and savor the pinnacle of sophistication.

This alluring enclave comprises a main lounge, meeting room, the starlight terrace, library, cigar room, and wine cellar/ tasting space, offering an exclusive and sophisticated retreat that embodies the essence of refinement.



AMENITIES

TOTAL AREA
679.0 SQ.M. / 7,306.0 SQ.FT.

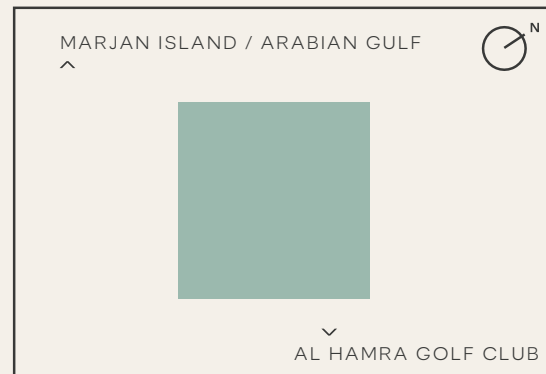
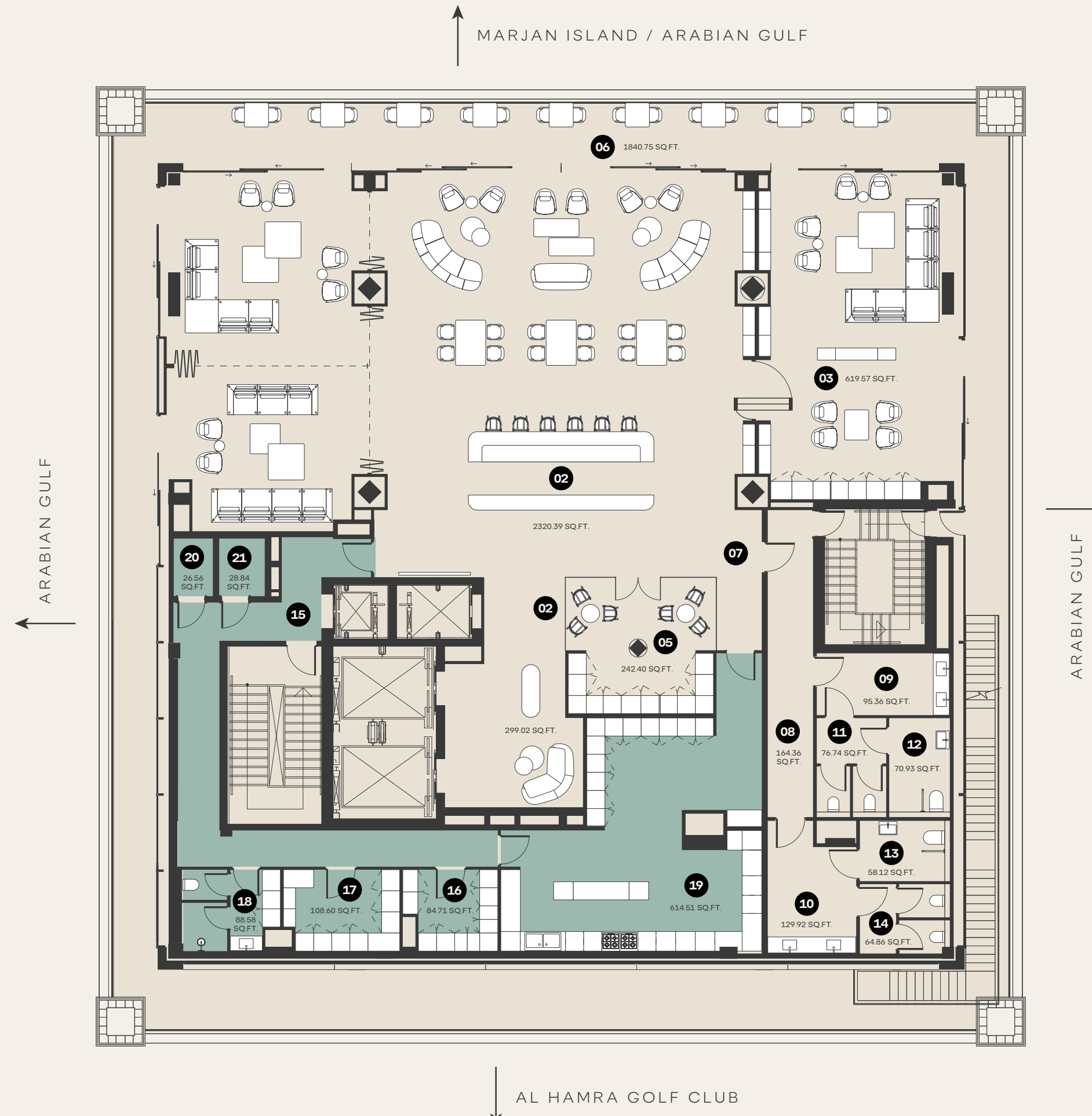
FLOORS
16TH

EXPLICATION OF PREMISES

- 01 FOYER
- 02 COASTAL VISTA LOUNGE & BAR
- 03 MONTE CARLO CIGAR LOUNGE
- 04 HUMIDOR
- 05 1893 WINE CELLAR
- 06 STARLIGHT TERRACE
- 07 HALL 1
- 08 HALL 2
- 09 POWDER ROOM 1
- 10 POWDER ROOM 2
- 11 WC 1
- 12 WC 2
- 13 WC 3
- 14 WC 4

EXPLANATION OF TECHNICAL PREMISES

- 15 HALL 3
- 16 FREEZER
- 17 STORAGE 2
- 18 SERVICE BATHROOM
- 19 KITCHEN
- 20 TELECOM ROOM
- 21 ELECTRICAL ROOM



ARTIST RENDERINGS: the artist representations and interior decorations, finishes, appliances and furnishings are provided for illustrative purposes only. The Developer makes no representations or warranties except as set forth in the sales agreement. Developer reserves the right to substitute materials, appliances, equipment, fixtures and other construction and design details specified herein with similar materials, appliances, equipment and/or fixtures of substantially equal or better quality. Developer reserves the right to make changes in accordance with the terms of the Offering Plan. The use of any designations, labels or nomenclature is for marketing purposes only.



STARLIGHT TERRACE

Celebrate the legacy of the famed WA Towers Starlight Terrace right here in Ras Al Khaimah and relive the magic with a stunning outdoor terrace that offers a unique experience under the starlit skies.





LIBRARY, MEETING ROOM & CIGAR LOUNGE

With a diverse array of literary works, the resident library invites residents to engross themselves in an extensive collection of timeless and contemporary literature.

Whether you are a seasoned aficionado or simply looking to unwind in style, the cigar lounge offers a haven of relaxation and refined indulgence.

WINE LOCKERS & CELLAR

Residents have the opportunity to store their own wine collections in private lockers within the cellar, ensuring optimal storage conditions and easy access to their prized vintages.

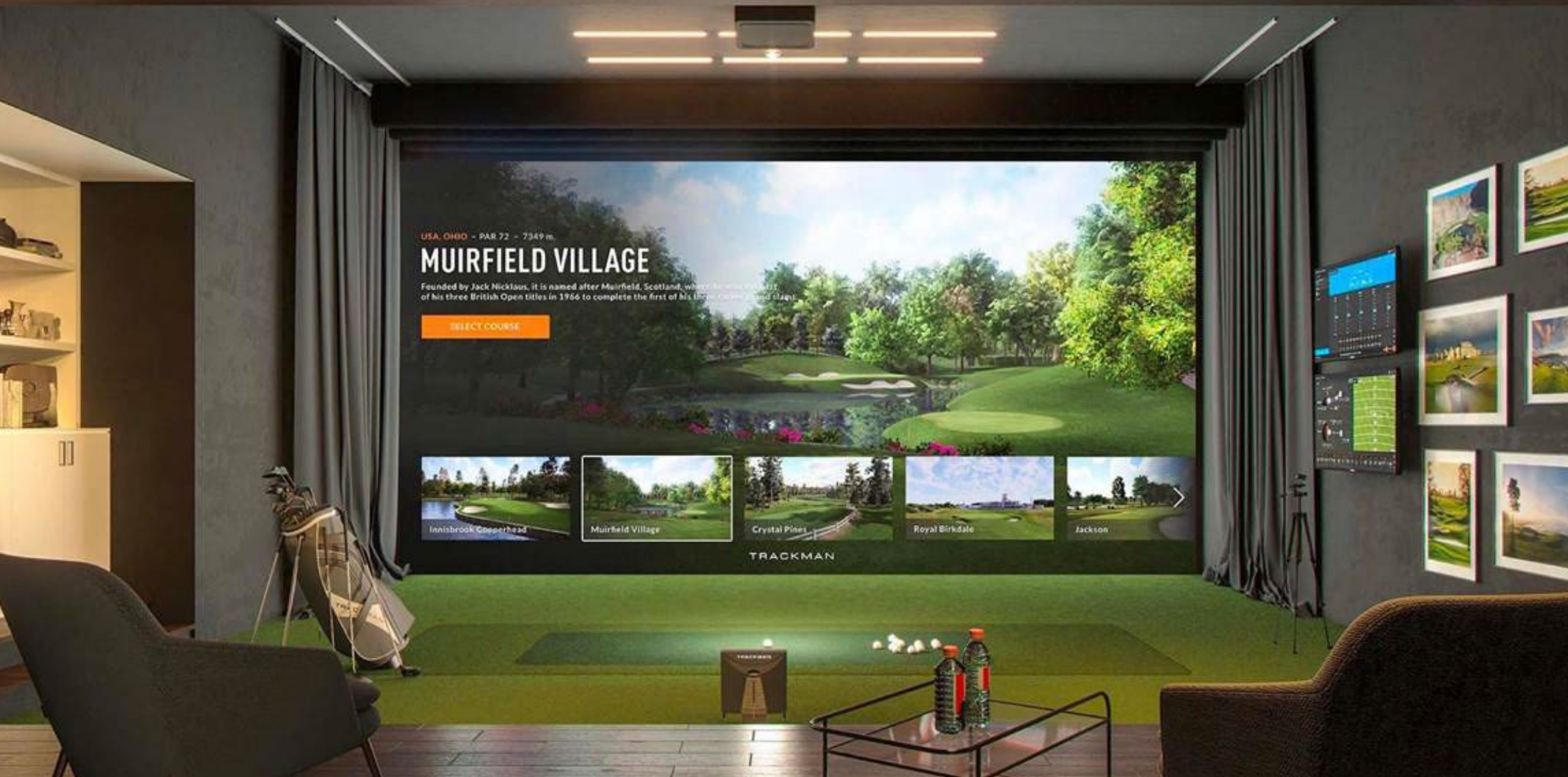




SPORTS SIMULATION & CINEMA ROOM

Equipped with state-of-the-art audiovisual technology and plush seating, the cinema room provides the perfect setting for residents to enjoy their favorite films in a dedicated space just steps away from their residence.

Whether perfecting your swing on world-renowned golf courses or scoring goals on grand football stadiums, the sports simulation room provides an exhilarating and immersive experience with cutting-edge technology and realistic graphics, this room offers a virtual experience that rivals the real thing.



FITNESS CENTRE & LONGEVITY SPA

Fitness center offers residents access to a state-of-the-art facility with personal trainers available to assist them in achieving their fitness goals.

With cutting-edge amenities such as cryochambers, ice baths, and IV drips, the spa offers state-of-the-art treatments to promote longevity and vitality, the Longevity Spa is a haven of rejuvenation and wellness for its residents.





PERSONAL CONCIERGE & P.R.O. SERVICES

From arranging transportation to securing reservations and organizing unique experiences, the concierge team goes above and beyond to curate unforgettable moments.

From visa and residency matters to document attestation and government liaison, the PRO service takes care of the necessary paperwork and procedures, allowing residents to focus on enjoying the amenities.

EXCLUSIVE RESIDENT AMENITIES

A host of services and private amenities are always at your disposal along with round-the-clock concierge dedicated for the residents to ensure a smooth and enjoyable experience every time you step in or out of your residence.

- Personal Concierge
- Fitness Centre with Personal Trainers
- Private Resident Lounge
- Famed Starlight terrace concept from Waldorf Astoria New York
- Dedicated Fitness Centre
- Cigar Lounge
- Business Centre
- Golf & Sports Simulation Room
- Alluring Bars and Lounges
- Resident Library
- Private Wine Locker & Cellar
- Cinema Lounge
- Pet Grooming Spa
- Personal PRO Service

RESORT- WIDE FACILITIES FOR
THE RESIDENTS INCLUDE:

- Retail Boutiques
- Beauty Saloon
- World Class Spa
- Multiple Swimming Pools
- Kids Club and Swimming Pool with Splash Pad
- Tennis Courts
- World Class Restaurants
- Private Dining Rooms
- Exclusive Chef's table dining experiences





WALDORF ASTORIA®
RESIDENCES • RAS AL KHAIMAH

والدورف أستوريا ريزيدنسز رأس الخيمة

FLOOR PLANS

2 BEDROOM TYPE 1

TOTAL AREA
175.6 SQ.M. / 1,889.3 SQ.FT.

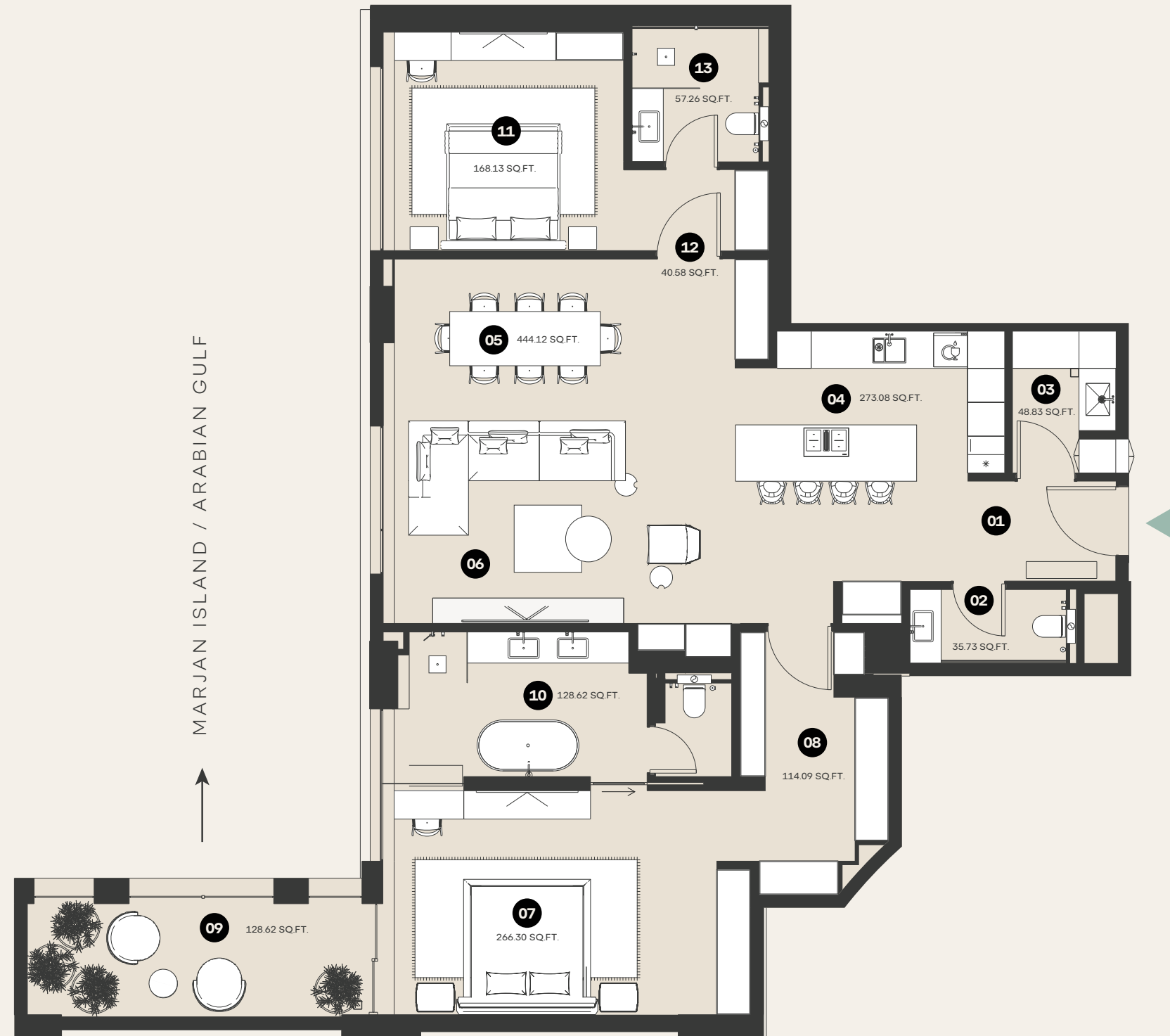
UNIT TYPE
SIMPLEX

VIEWS
PARTIAL SEA VIEW

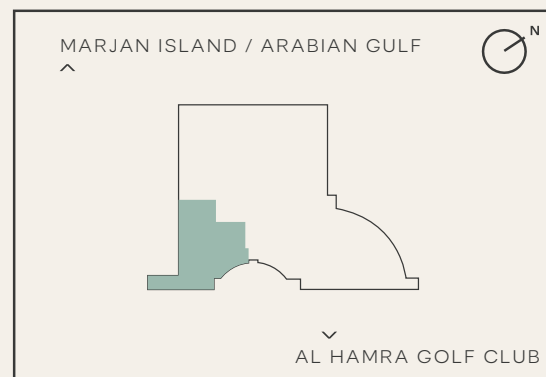
FLOORS
1ST

EXPLICATION OF PREMISES

- 01 FOYER
- 02 POWDER ROOM
- 03 LAUNDRY
- 04 KITCHEN AREA / BREAKFAST COUNTER
- 05 DINING AREA
- 06 LIVING AREA
- 07 MASTER BEDROOM
- 08 MASTER BEDROOM CLOSET
- 09 MASTER BEDROOM TERRACE
- 10 MASTER BATHROOM
- 11 BEDROOM 2
- 12 BEDROOM 2 CLOSET
- 13 BATHROOM 2



NUMBER OF UNITS: 1
STARTING PRICE: AED 8,400,000



ARTIST RENDERINGS: the artist representations and interior decorations, finishes, appliances and furnishings are provided for illustrative purposes only. The Developer makes no representations or warranties except as set forth in the sales agreement. Developer reserves the right to substitute materials, appliances, equipment, fixtures and other construction and design details specified herein with similar materials, appliances, equipment and/or fixtures of substantially equal or better quality. Developer reserves the right to make changes in accordance with the terms of the Offering Plan. The use of any designations, labels or nomenclature is for marketing purposes only.



2 BEDROOM TYPE 2

TOTAL AREA
217.1 SQ.M. / 2,336.1 SQ.FT.

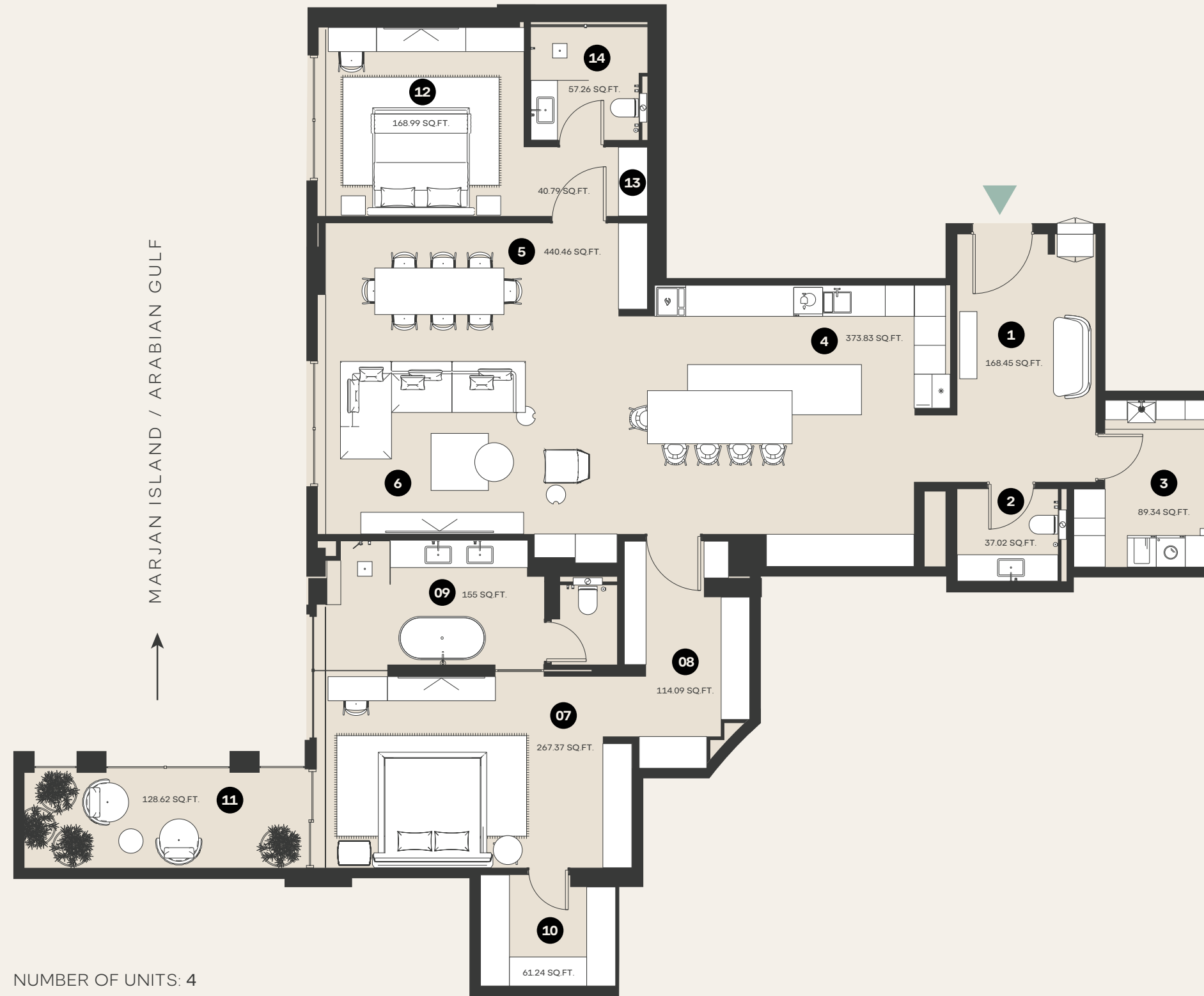
UNIT TYPE
SIMPLEX

VIEWS
PARTIAL SEA VIEW

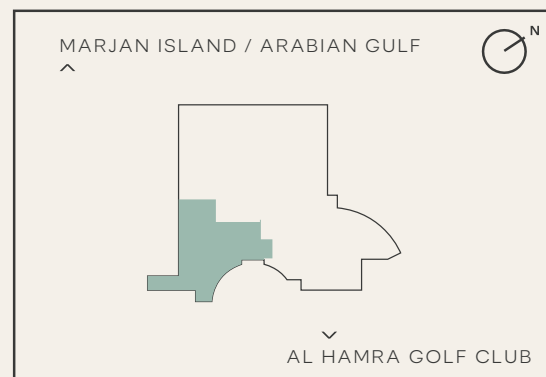
FLOORS
2ND, 3RD, 4TH & 5TH

EXPLICATION OF PREMISES

- 01 FOYER
- 02 POWDER ROOM
- 03 LAUNDRY
- 04 KITCHEN AREA / BREAKFAST COUNTER
- 05 DINING AREA
- 06 LIVING AREA
- 07 MASTER BEDROOM
- 08 MASTER BEDROOM CLOSET
- 09 MASTER BATHROOM
- 10 SAFE ROOM
- 11 MASTER BEDROOM TERRACE
- 12 BEDROOM 2
- 13 BEDROOM 2 CLOSET
- 14 BATHROOM 2



NUMBER OF UNITS: 4
STARTING PRICE: AED 10,500,000



ARTIST RENDERINGS: the artist representations and interior decorations, finishes, appliances and furnishings are provided for illustrative purposes only. The Developer makes no representations or warranties except as set forth in the sales agreement. Developer reserves the right to substitute materials, appliances, equipment, fixtures and other construction and design details specified herein with similar materials, appliances, equipment and/or fixtures of substantially equal or better quality. Developer reserves the right to make changes in accordance with the terms of the Offering Plan. The use of any designations, labels or nomenclature is for marketing purposes only.



2 BEDROOM TYPE 3

TOTAL AREA
335.7 SQ.M. / 3,613.5 SQ.FT.

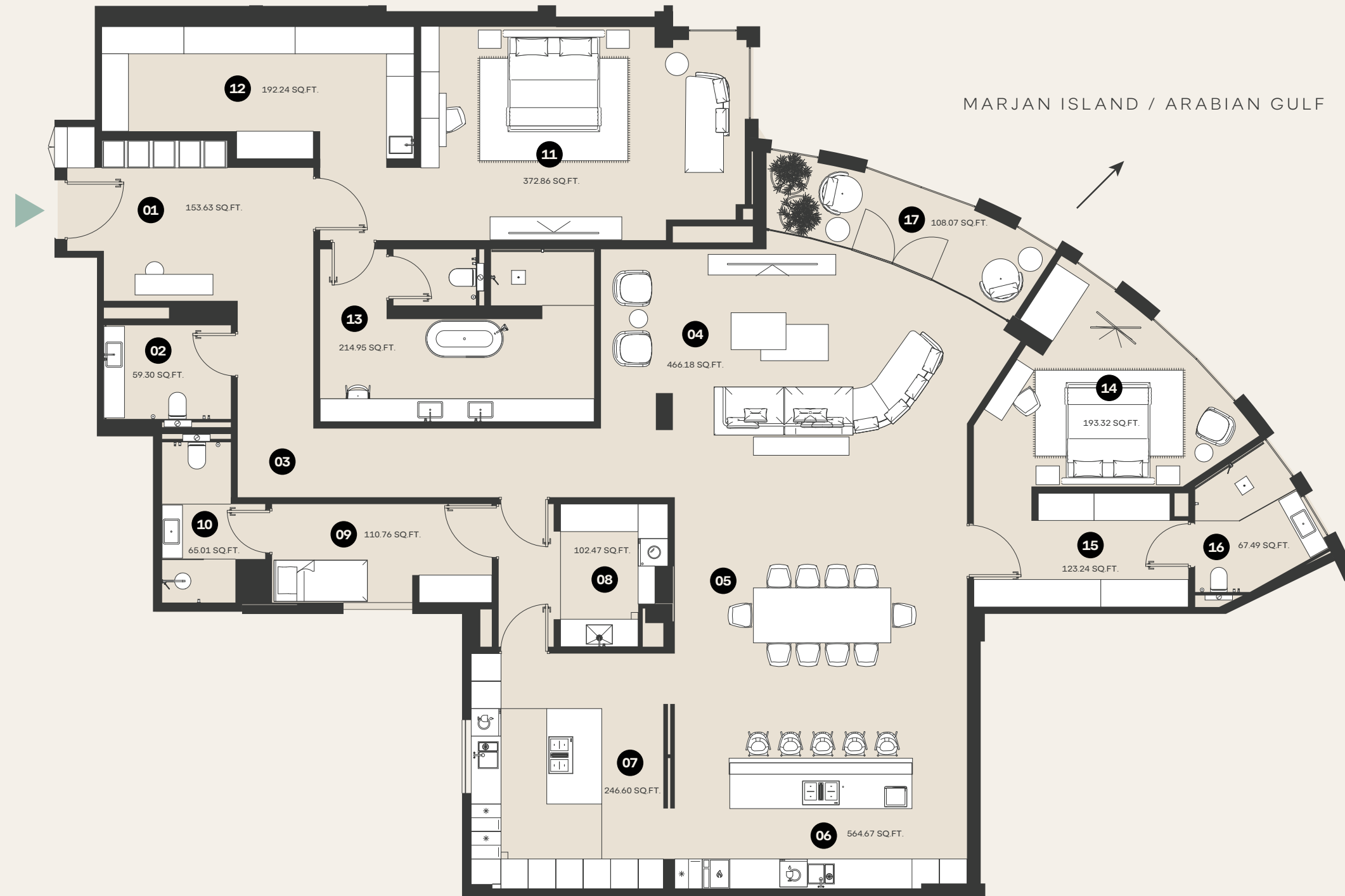
UNIT TYPE
SIMPLEX

VIEWS
PARTIAL SEA VIEW

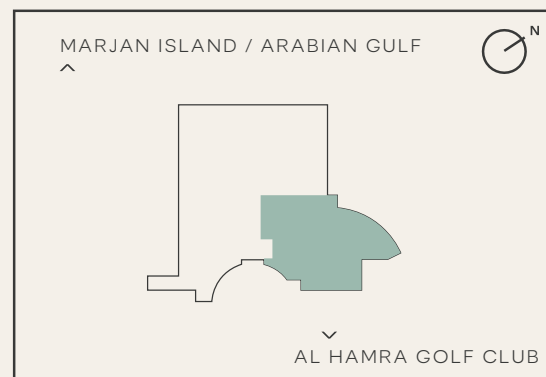
FLOORS
2ND, 3RD, 4TH & 5TH

EXPLICATION OF PREMISES

- 01 FOYER
- 02 POWDER ROOM
- 03 HALL
- 04 LIVING AREA
- 05 DINING AREA
- 06 KITCHEN AREA / BREAKFAST COUNTER
- 07 PREP KITCHEN
- 08 LAUNDRY
- 09 MAID'S ROOM
- 10 MAID'S BATHROOM
- 11 MASTER BEDROOM
- 12 MASTER BEDROOM CLOSET
- 13 MASTER BATHROOM
- 14 BEDROOM 2
- 15 BEDROOM 2 CLOSET
- 16 BATHROOM 2
- 17 TERRACE



NUMBER OF UNITS: 4
STARTING PRICE: AED 16,300,000



ARTIST RENDERINGS: the artist representations and interior decorations, finishes, appliances and furnishings are provided for illustrative purposes only. The Developer makes no representations or warranties except as set forth in the sales agreement. Developer reserves the right to substitute materials, appliances, equipment, fixtures and other construction and design details specified herein with similar materials, appliances, equipment and/or fixtures of substantially equal or better quality. Developer reserves the right to make changes in accordance with the terms of the Offering Plan. The use of any designations, labels or nomenclature is for marketing purposes only.



3 BEDROOM TYPE 1

TOTAL AREA
401.9 SQ.M. / 4,324.0 SQ.FT.

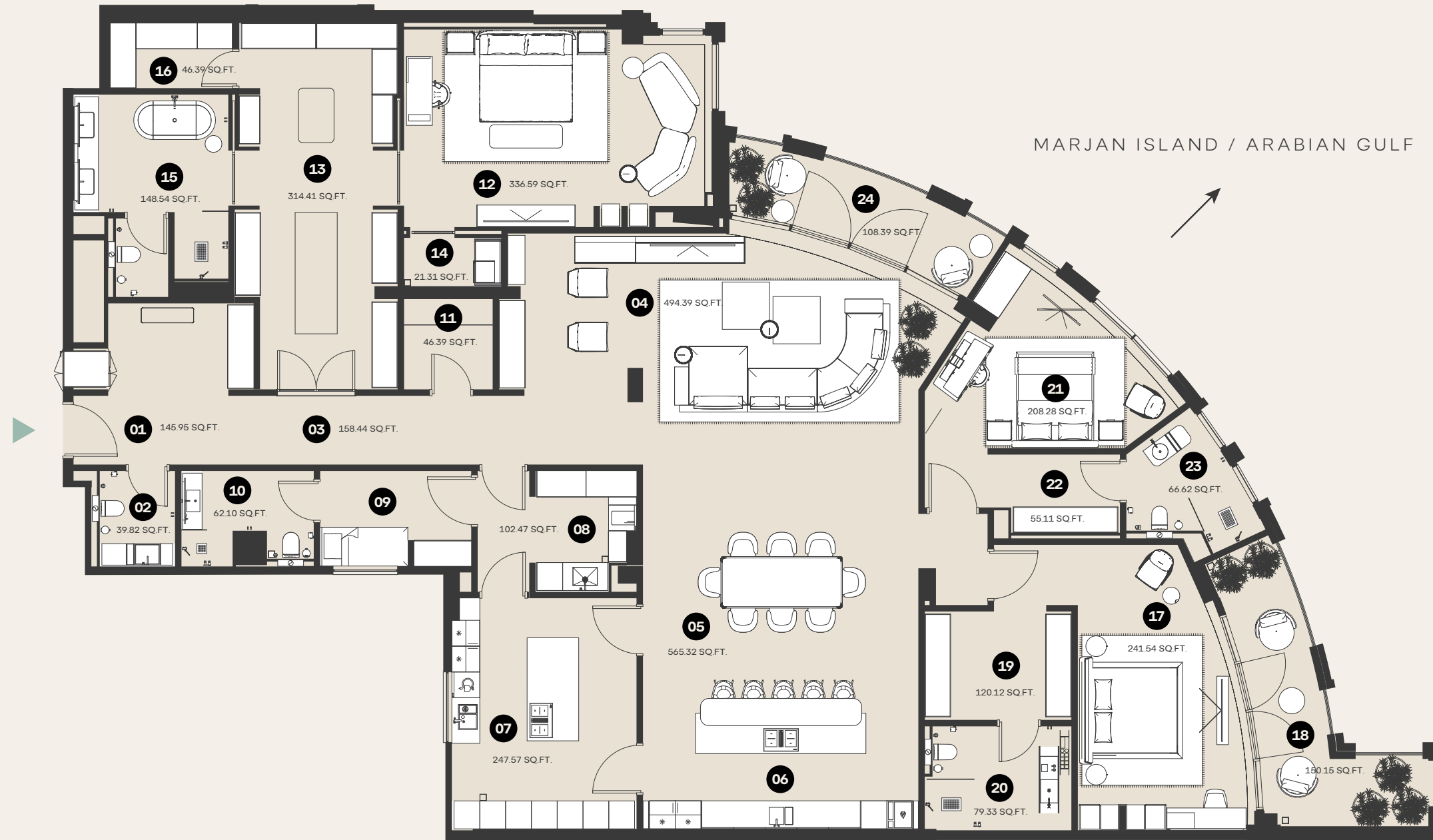
UNIT TYPE
SIMPLEX

VIEWS
PARTIAL SEA VIEW

FLOORS
1ST

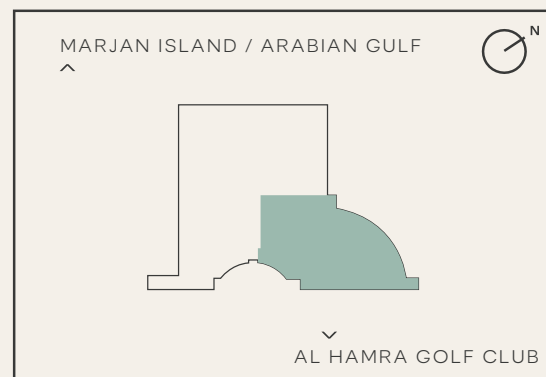
EXPLICATION OF PREMISES

- 01 FOYER
- 02 POWDER ROOM
- 03 HALL
- 04 LIVING AREA
- 05 DINING AREA
- 06 KITCHEN AREA / BREAKFAST COUNTER
- 07 PREP KITCHEN
- 08 LAUNDRY
- 09 MAID'S ROOM
- 10 MAID'S BATHROOM
- 11 STORAGE
- 12 MASTER BEDROOM
- 13 MASTER BEDROOM CLOSET
- 14 MASTER BEDROOM WET BAR
- 15 MASTER BATHROOM
- 16 MASTER BEDROOM SAFE
- 17 BEDROOM 2
- 18 BEDROOM 2 TERRACE
- 19 BEDROOM 2 CLOSET
- 20 BATHROOM 2
- 21 BEDROOM 3
- 22 BEDROOM 3 CLOSET
- 23 BATHROOM 3
- 24 TERRACE



MARJAN ISLAND / ARABIAN GULF

NUMBER OF UNITS: 1
STARTING PRICE: AED 19,100,000



ARTIST RENDERINGS: the artist representations and interior decorations, finishes, appliances and furnishings are provided for illustrative purposes only. The Developer makes no representations or warranties except as set forth in the sales agreement. Developer reserves the right to substitute materials, appliances, equipment, fixtures and other construction and design details specified herein with similar materials, appliances, equipment and/or fixtures of substantially equal or better quality. Developer reserves the right to make changes in accordance with the terms of the Offering Plan. The use of any designations, labels or nomenclature is for marketing purposes only.



3 BEDROOM TYPE 2.1

TOTAL AREA
308.3 SQ.M. / 3,011.7 SQ.FT.

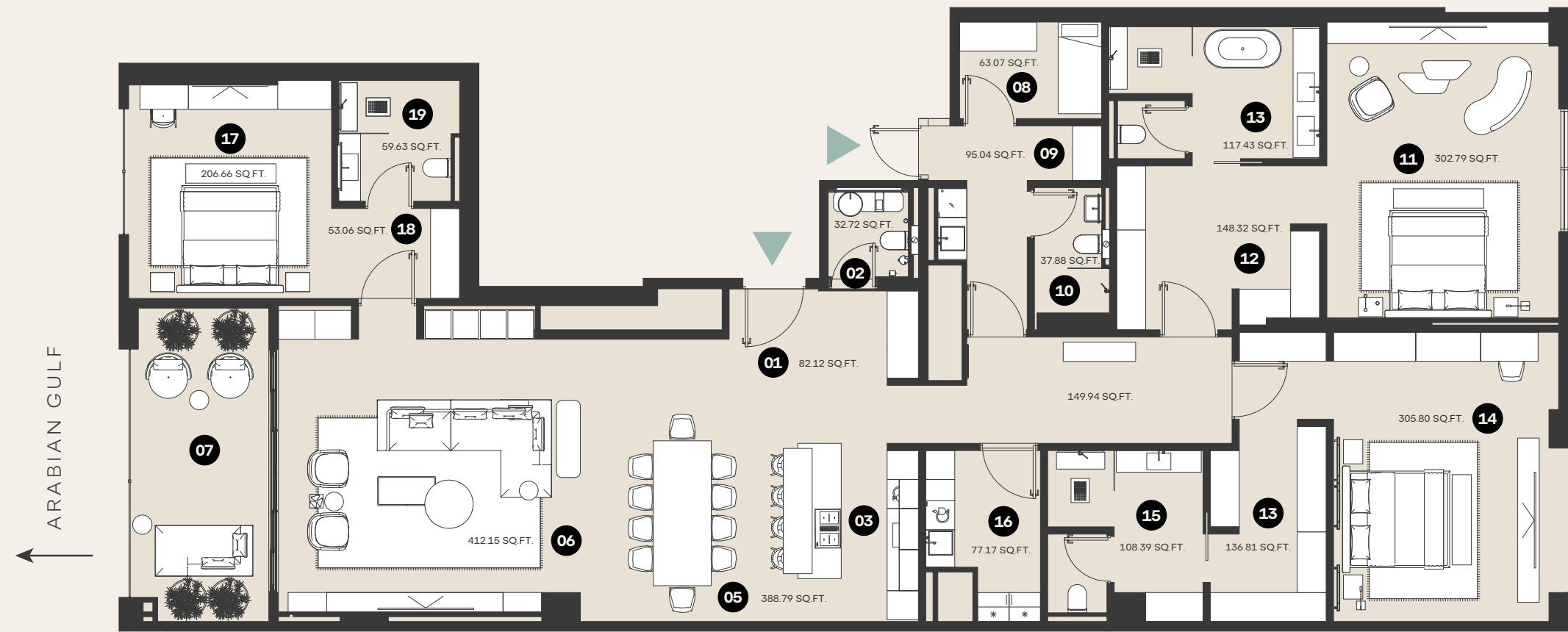
UNIT TYPE
SIMPLEX

VIEWS
PARTIAL SEA VIEW

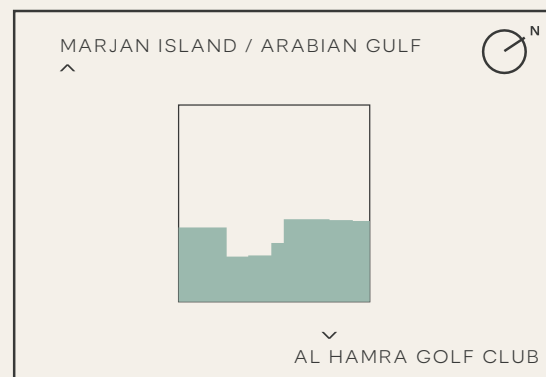
FLOORS
6TH & 7TH

EXPLICATION OF PREMISES

- 01 FOYER
- 02 POWDER ROOM
- 03 KITCHEN AREA / BREAKFAST COUNTER
- 04 PREP KITCHEN
- 05 DINING AREA
- 06 LIVING AREA
- 07 TERRACE
- 08 MAID'S ROOM
- 09 LAUNDRY
- 10 MAID'S BATHROOM
- 11 MASTER BEDROOM
- 12 MASTER CLOSET
- 13 MASTER BATHROOM
- 14 BEDROOM 2
- 15 BEDROOM 2 CLOSET
- 16 BATHROOM 2
- 17 BEDROOM 3
- 18 BEDROOM 3 CLOSET
- 19 BATHROOM 3



NUMBER OF UNITS: 2
STARTING PRICE: AED 16,000,000



ARTIST RENDERINGS: the artist representations and interior decorations, finishes, appliances and furnishings are provided for illustrative purposes only. The Developer makes no representations or warranties except as set forth in the sales agreement. Developer reserves the right to substitute materials, appliances, equipment, fixtures and other construction and design details specified herein with similar materials, appliances, equipment and/or fixtures of substantially equal or better quality. Developer reserves the right to make changes in accordance with the terms of the Offering Plan. The use of any designations, labels or nomenclature is for marketing purposes only.



3 BEDROOM TYPE 2.2

TOTAL AREA
308.3 SQ.M. / 3,317.1 SQ.FT.

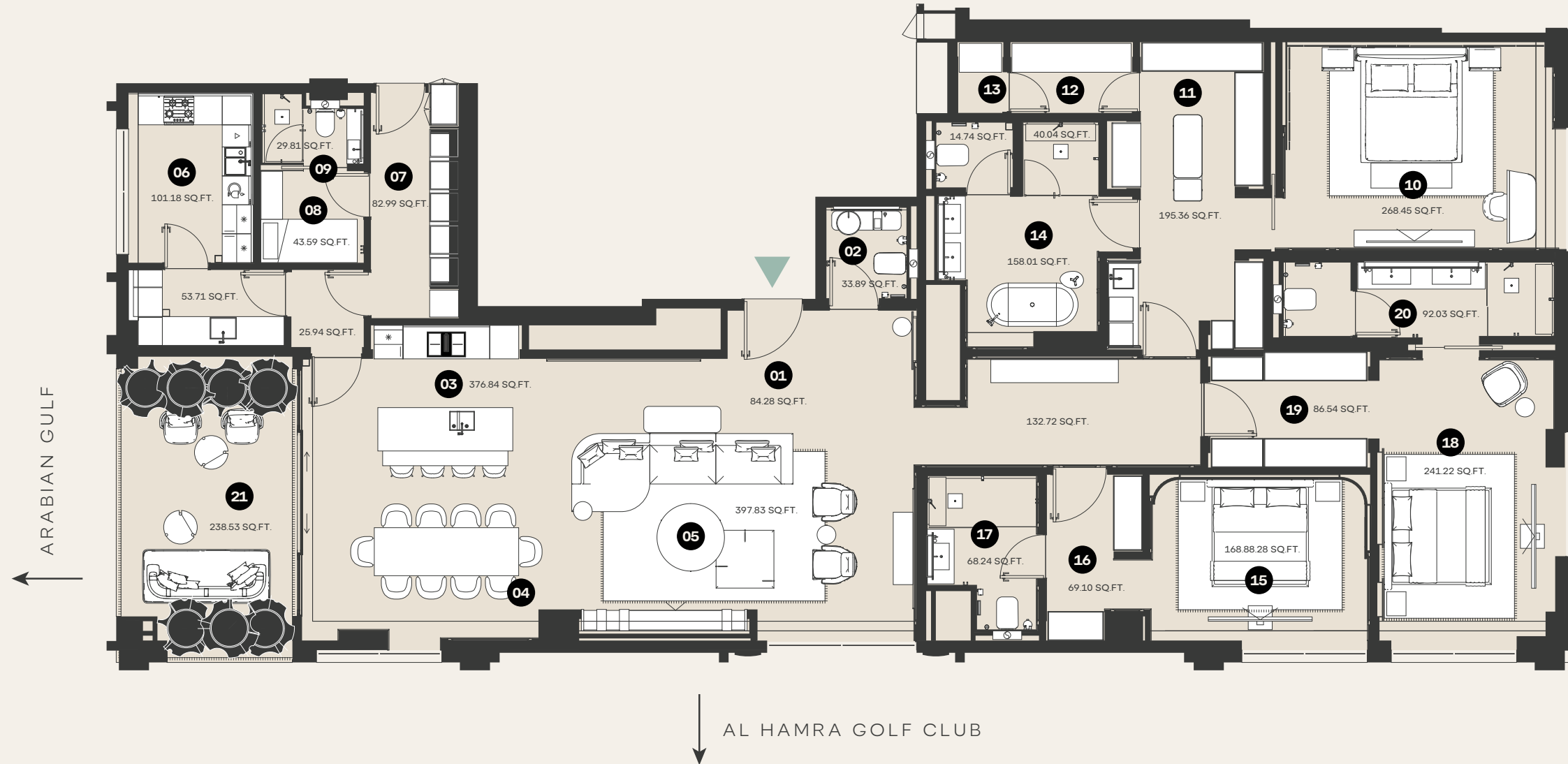
UNIT TYPE
SIMPLEX

VIEWS
PARTIAL SEA & GOLF VIEW

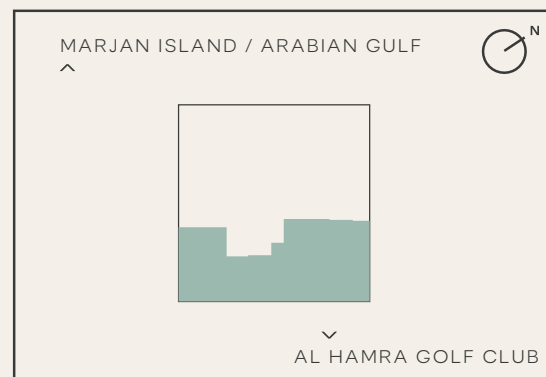
FLOORS
8TH, 9TH, 11TH, 12TH, 13TH & 14TH

EXPLICATION OF PREMISES

- 01 FOYER
- 02 POWDER ROOM
- 03 KITCHEN AREA / BREAKFAST COUNTER
- 04 DINING AREA
- 05 LIVING AREA
- 06 PREP KITCHEN
- 07 LAUNDRY
- 08 MAID'S BEDROOM
- 09 MAID'S BATHROOM
- 10 MASTER BEDROOM
- 11 MASTER CLOSET
- 12 MASTER BEDROOM STORAGE
- 13 MASTER BEDROOM SAFE
- 14 MASTER BATHROOM
- 15 BEDROOM 2
- 16 BEDROOM 2 CLOSET
- 17 BATHROOM 2
- 18 BEDROOM 3
- 19 BEDROOM 3 CLOSET
- 20 BATHROOM 3
- 21 TERRACE



NUMBER OF UNITS: 6
STARTING PRICE: AED 16,500,000



ARTIST RENDERINGS: the artist representations and interior decorations, finishes, appliances and furnishings are provided for illustrative purposes only. The Developer makes no representations or warranties except as set forth in the sales agreement. Developer reserves the right to substitute materials, appliances, equipment, fixtures and other construction and design details specified herein with similar materials, appliances, equipment and/or fixtures of substantially equal or better quality. Developer reserves the right to make changes in accordance with the terms of the Offering Plan. The use of any designations, labels or nomenclature is for marketing purposes only.



3 BEDROOM

TYPE 2.3

TOTAL AREA
308.3 SQ.M. / 3,318.3 SQ.FT.

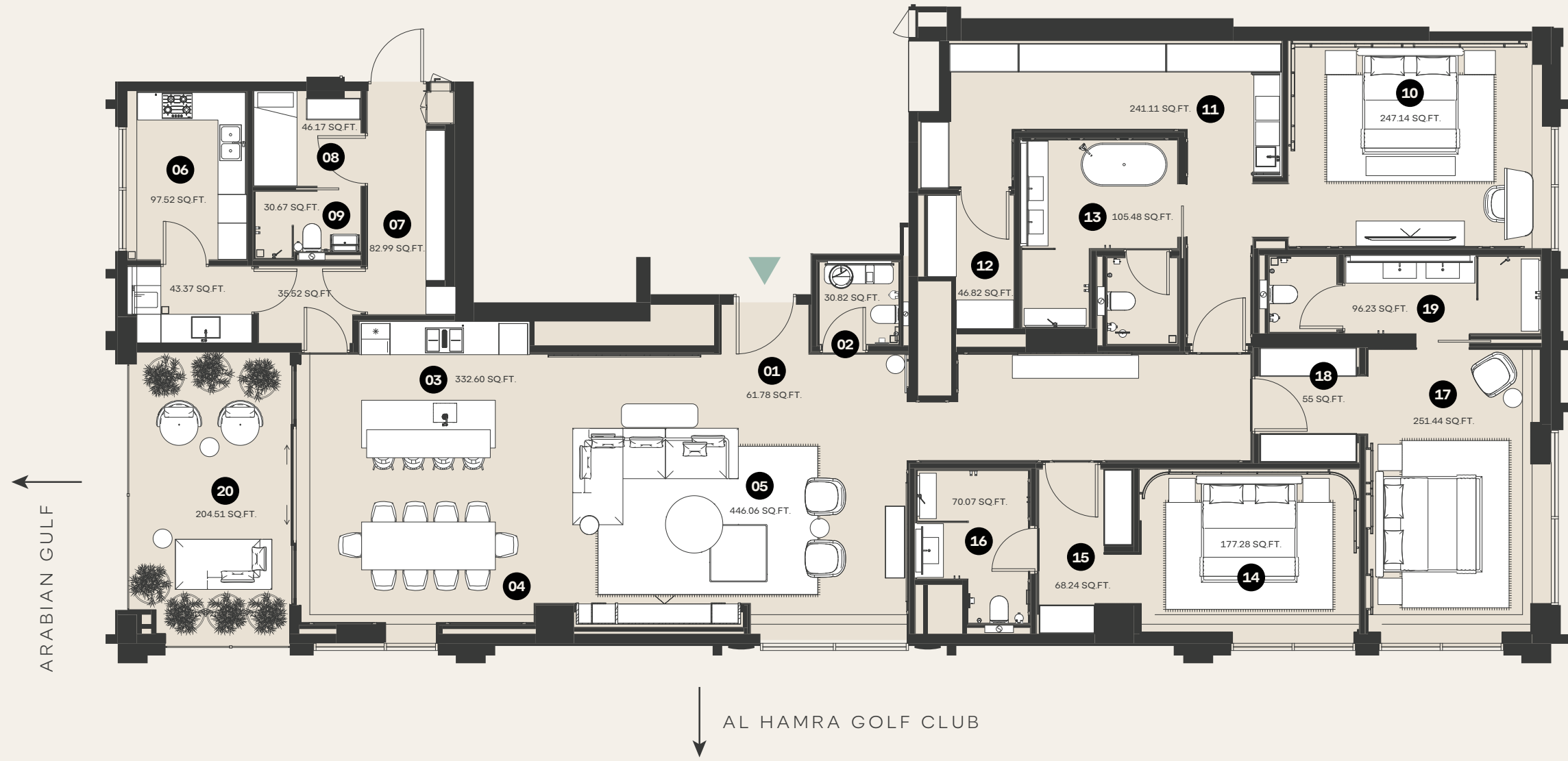
UNIT TYPE
SIMPLEX

VIEWS
PARTIAL SEA & GOLF VIEW

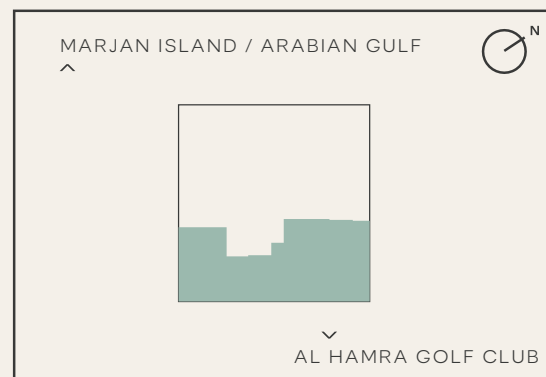
FLOORS
10TH

EXPLICATION OF PREMISES

- 01 FOYER
- 02 POWDER ROOM
- 03 KITCHEN AREA / BREAKFAST COUNTER
- 04 DINING AREA
- 05 LIVING AREA
- 06 PREP KITCHEN
- 07 CORRIDOR
- 08 MAID'S BEDROOM
- 09 MAID'S BATHROOM
- 10 MASTER BEDROOM
- 11 MASTER CLOSET
- 12 MASTER BEDROOM SAFE
- 13 MASTER BATHROOM
- 14 BEDROOM 2
- 15 BEDROOM 2 CLOSET
- 16 BATHROOM 2
- 17 BEDROOM 3
- 18 BEDROOM 3 CLOSET
- 19 BATHROOM 3
- 20 TERRACE



NUMBER OF UNITS: 1
STARTING PRICE: AED 17,000,000



ARTIST RENDERINGS: the artist representations and interior decorations, finishes, appliances and furnishings are provided for illustrative purposes only. The Developer makes no representations or warranties except as set forth in the sales agreement. Developer reserves the right to substitute materials, appliances, equipment, fixtures and other construction and design details specified herein with similar materials, appliances, equipment and/or fixtures of substantially equal or better quality. Developer reserves the right to make changes in accordance with the terms of the Offering Plan. The use of any designations, labels or nomenclature is for marketing purposes only.



3 BEDROOM

TYPE 2.4

TOTAL AREA
308.3 SQ.M. / 3,317.1 SQ.FT.

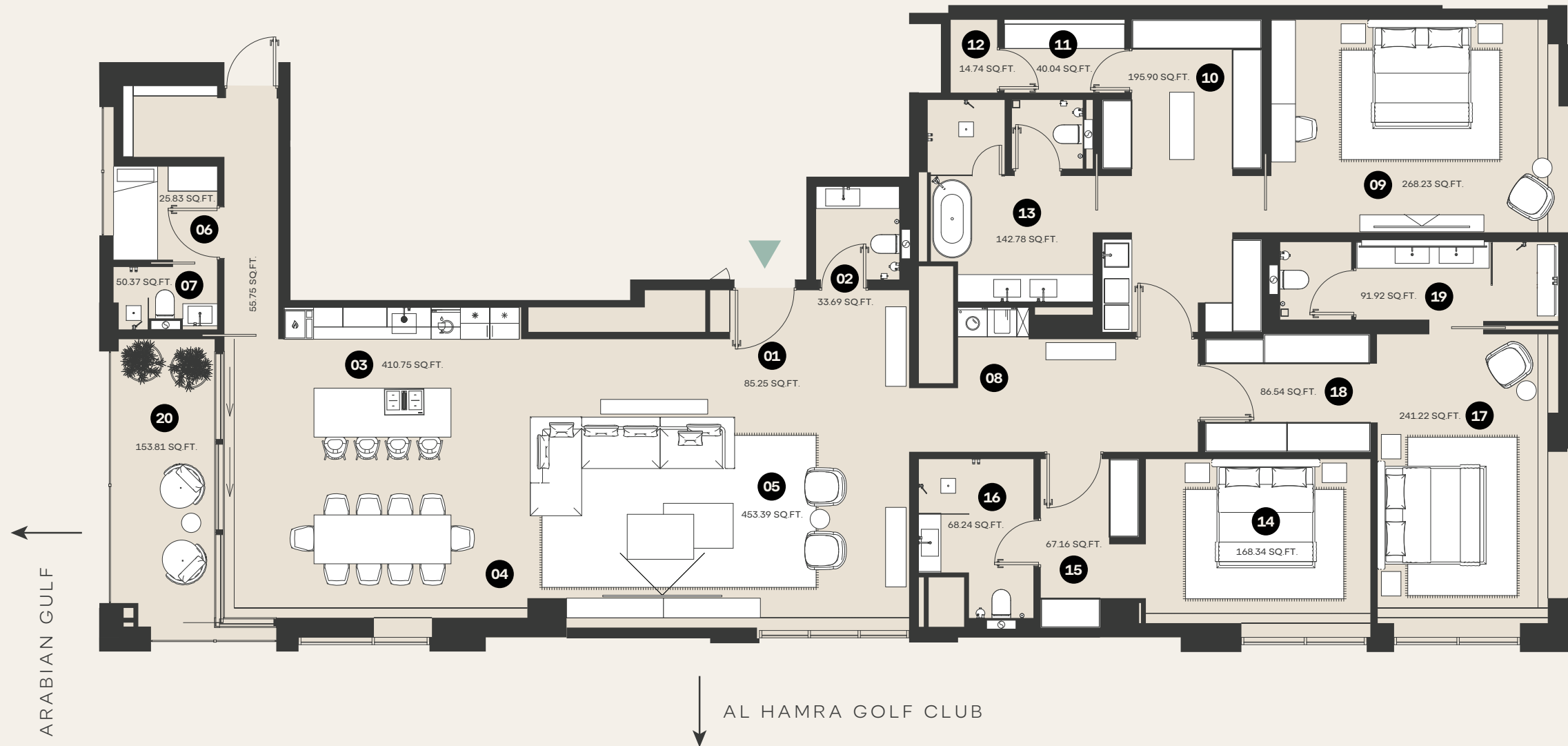
UNIT TYPE
SIMPLEX

VIEWS
PARTIAL SEA & GOLF VIEW

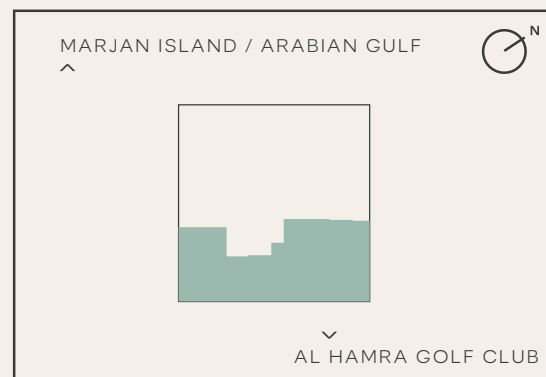
FLOORS
15TH

EXPLICATION OF PREMISES

- 01 FOYER
- 02 POWDER ROOM
- 03 KITCHEN AREA / BREAKFAST COUNER
- 04 DINING AREA
- 05 LIVING AREA
- 06 MAID'S BEDROOM
- 07 MAID'S BATHROOM
- 08 LAUNDRY
- 09 MASTER BEDROOM
- 10 MASTER CLOSET
- 11 MASTER BEDROOM STORAGE
- 12 MASTER BEDROOM SAFE
- 13 MASTER BATHROOM
- 14 BEDROOM 2
- 15 CLOSET 2
- 16 BATHROOM 2
- 17 BEDROOM 3
- 18 CLOSET 3
- 19 BATHROOM 3
- 20 TERRACE



NUMBER OF UNITS: 1
STARTING PRICE: AED 19,300,000



ARTIST RENDERINGS: the artist representations and interior decorations, finishes, appliances and furnishings are provided for illustrative purposes only. The Developer makes no representations or warranties except as set forth in the sales agreement. Developer reserves the right to substitute materials, appliances, equipment, fixtures and other construction and design details specified herein with similar materials, appliances, equipment and/or fixtures of substantially equal or better quality. Developer reserves the right to make changes in accordance with the terms of the Offering Plan. The use of any designations, labels or nomenclature is for marketing purposes only.



3 BEDROOM

TYPE 3

TOTAL AREA
384.2 SQ.M. / 4,135.6 SQ.FT.

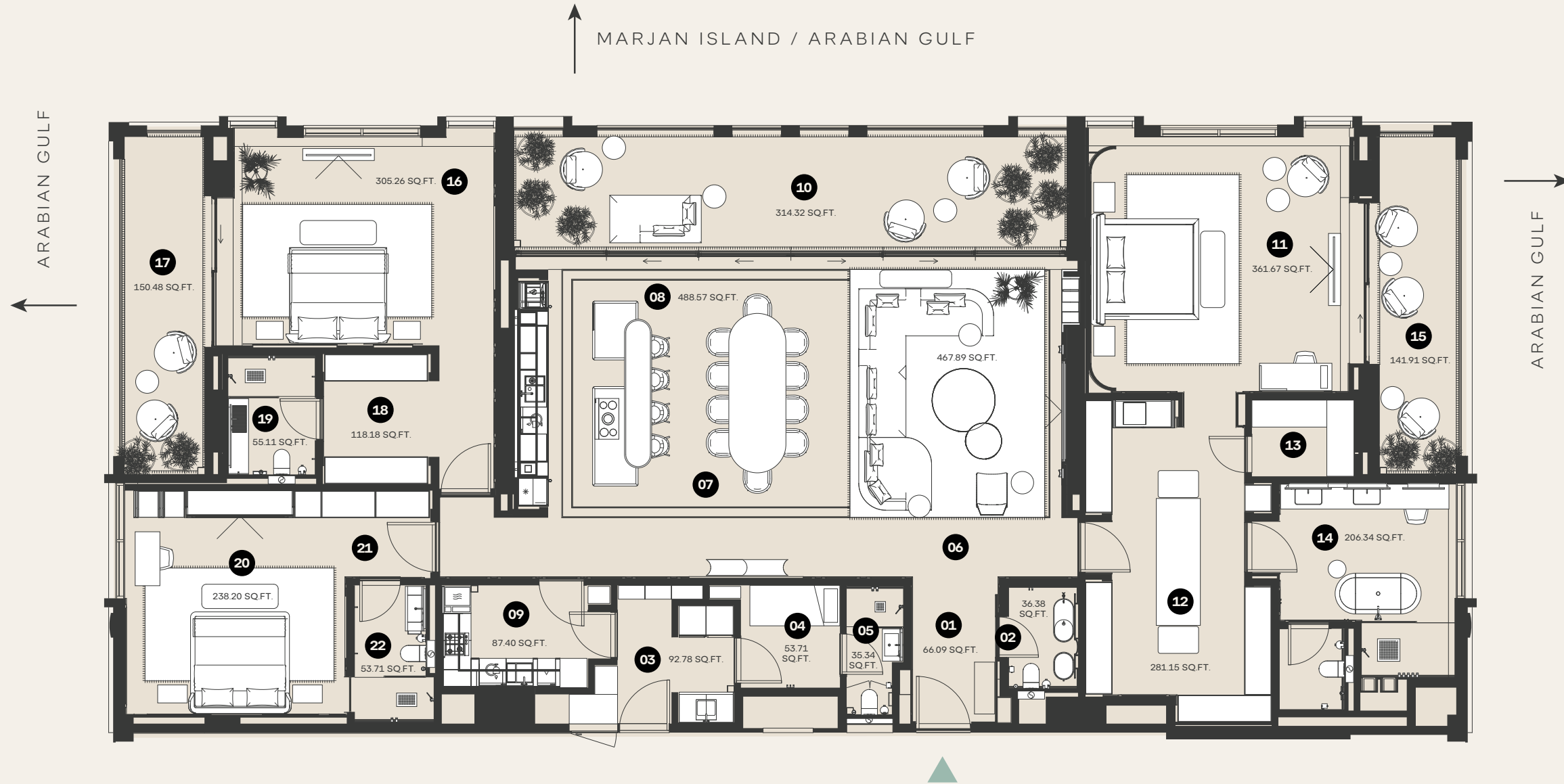
UNIT TYPE
SIMPLEX

VIEWS
SEA VIEW

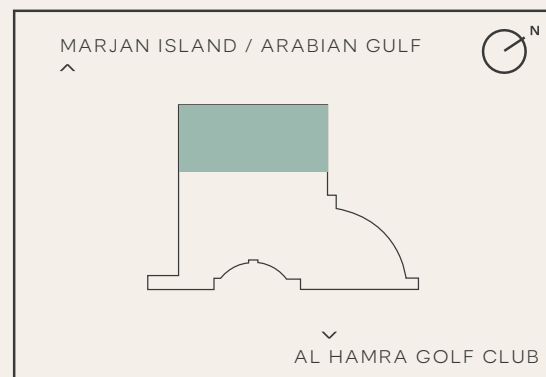
FLOORS
1ST - 15TH

EXPLICATION OF PREMISES

- 01 FOYER
- 02 POWDER ROOM
- 03 LAUNDRY
- 04 MAID'S BEDROOM
- 05 MAID'S BATHROOM
- 06 LIVING AREA
- 07 DINING AREA
- 08 KITCHEN AREA / BREAKFAST COUNTER
- 09 PREP KITCHEN
- 10 TERRACE
- 11 MASTER BEDROOM
- 12 MASTER CLOSET
- 13 MASTER BEDROOM SAFE
- 14 MASTER BATHROOM
- 15 MASTER BEDROOM TERRACE
- 16 BEDROOM 2
- 17 BEDROOM 2 TERRACE
- 18 BEDROOM 2 CLOSET
- 19 BATHROOM 2
- 20 BEDROOM 3
- 21 BEDROOM 3 CLOSET
- 22 BATHROOM 3



NUMBER OF UNITS: 15
STARTING PRICE: AED 19,300,000



ARTIST RENDERINGS: the artist representations and interior decorations, finishes, appliances and furnishings are provided for illustrative purposes only. The Developer makes no representations or warranties except as set forth in the sales agreement. Developer reserves the right to substitute materials, appliances, equipment, fixtures and other construction and design details specified herein with similar materials, appliances, equipment and/or fixtures of substantially equal or better quality. Developer reserves the right to make changes in accordance with the terms of the Offering Plan. The use of any designations, labels or nomenclature is for marketing purposes only.



4 BEDROOM PENTHOUSE DUPLEX

TOTAL AREA
316.0 SQ.M. / 3400.2 SQ.FT.

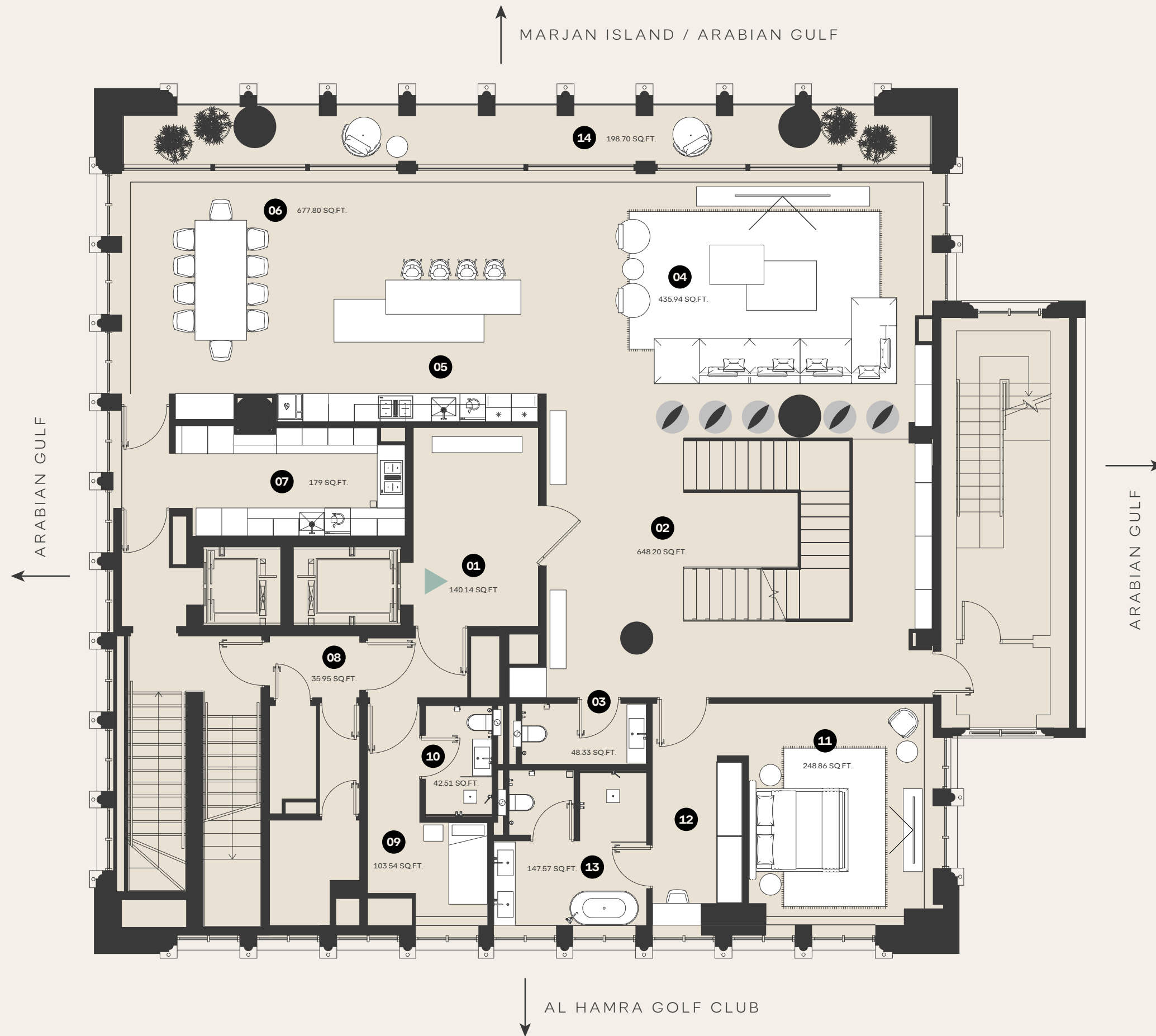
UNIT TYPE
DUPLEX

VIEWS
360 VIEWS

FLOORS
19TH

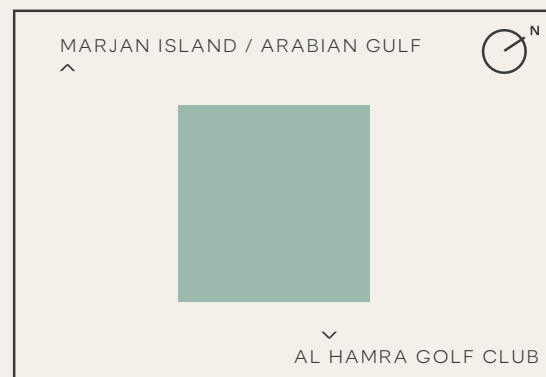
EXPLICATION OF PREMISES

- 01 FOYER
- 02 HALL
- 03 POWDER ROOM
- 04 LIVING AREA
- 05 KITCHEN AREA / BREAKFAST COUNTER
- 06 DINING AREA
- 07 PREP KITCHEN
- 08 CORRIDOR
- 09 MAID'S BEDROOM
- 10 MAID'S BATHROOM
- 11 BEDROOM 1
- 12 BEDROOM 1 CLOSET
- 13 BATHROOM 1
- 14 TERRACE



NUMBER OF UNITS: 1
STARTING PRICE: AED 50,000,000

ARTIST RENDERINGS: the artist representations and interior decorations, finishes, appliances and furnishings are provided for illustrative purposes only. The Developer makes no representations or warranties except as set forth in the sales agreement. Developer reserves the right to substitute materials, appliances, equipment, fixtures and other construction and design details specified herein with similar materials, appliances, equipment and/or fixtures of substantially equal or better quality. Developer reserves the right to make changes in accordance with the terms of the Offering Plan. The use of any designations, labels or nomenclature is for marketing purposes only.



4 BEDROOM PENTHOUSE DUPLEX

TOTAL AREA
316.0 SQ.M. / 3400.2 SQ.FT.

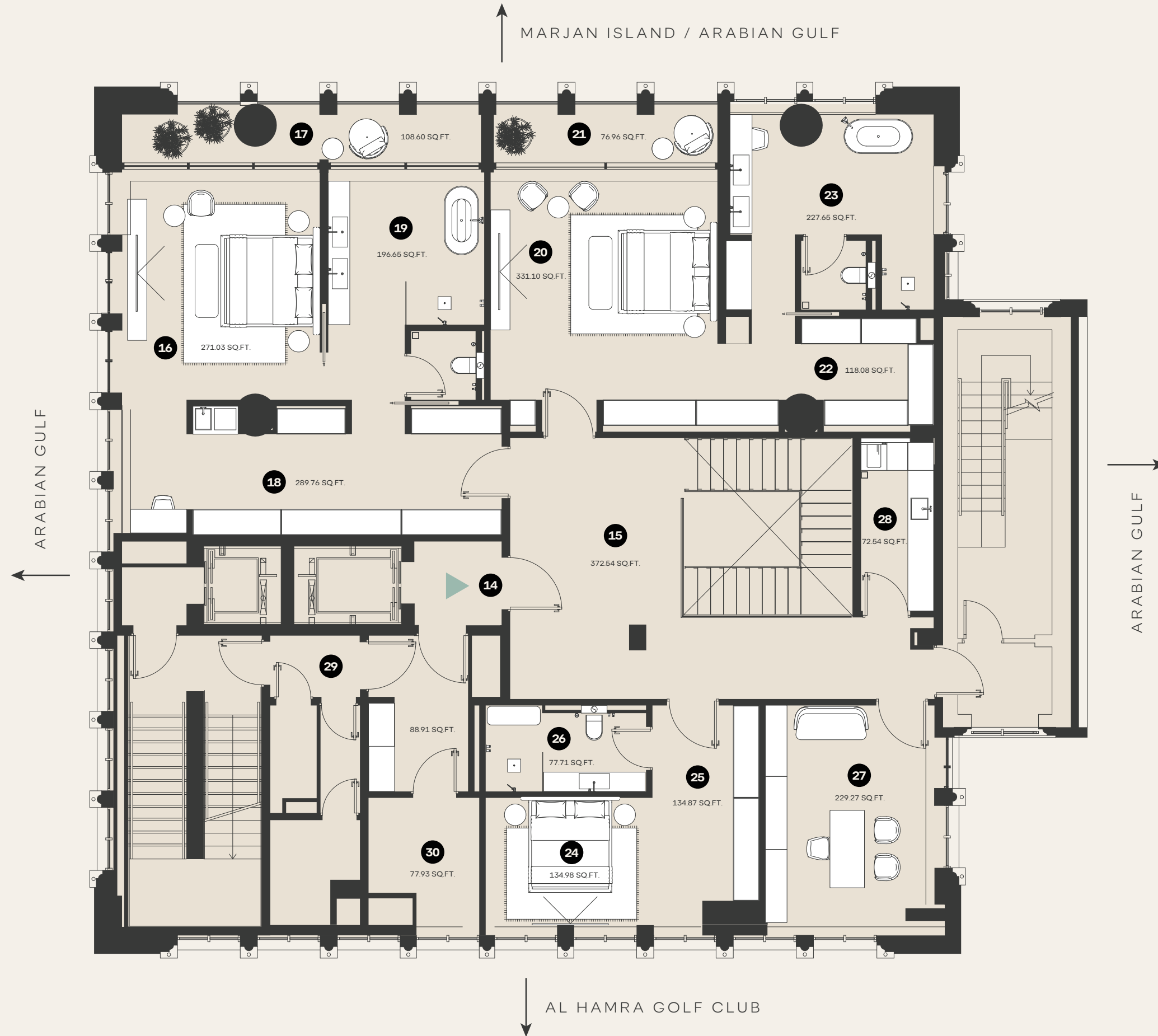
UNIT TYPE
DUPLEX

VIEWS
360 VIEWS

FLOORS
20TH

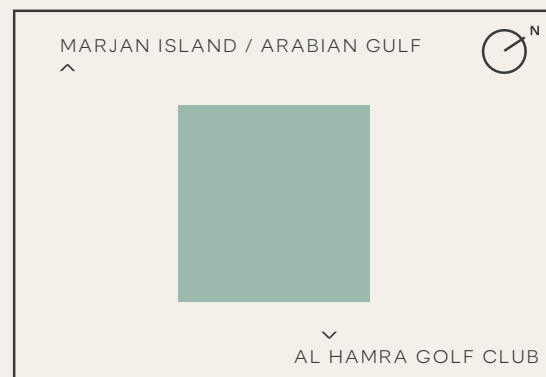
EXPLICATION OF PREMISES

- 14 FOYER 2
- 15 HALL 2
- 16 MASTER BEDROOM
- 17 MASTER BEDROOM TERRACE
- 18 MASTER CLOSET
- 19 MASTER BATHROOM
- 20 BEDROOM 2
- 21 BEDROOM 2 TERRACE
- 22 CLOSET 2
- 23 BEDROOM 2 BATHROOM
- 24 BEDROOM 3
- 25 CLOSET 3
- 26 BEDROOM 3 BATHROOM
- 27 OFFICE
- 28 LAUNDRY
- 29 CORRIDOR
- 30 GSM ROOM



NUMBER OF UNITS: 1
STARTING PRICE: AED 50,000,000

ARTIST RENDERINGS: the artist representations and interior decorations, finishes, appliances and furnishings are provided for illustrative purposes only. The Developer makes no representations or warranties except as set forth in the sales agreement. Developer reserves the right to substitute materials, appliances, equipment, fixtures and other construction and design details specified herein with similar materials, appliances, equipment and/or fixtures of substantially equal or better quality. Developer reserves the right to make changes in accordance with the terms of the Offering Plan. The use of any designations, labels or nomenclature is for marketing purposes only.



5 BEDROOM PENTHOUSE

TOTAL AREA
552.0 SQ.M. / 5,939.5 SQ.FT.

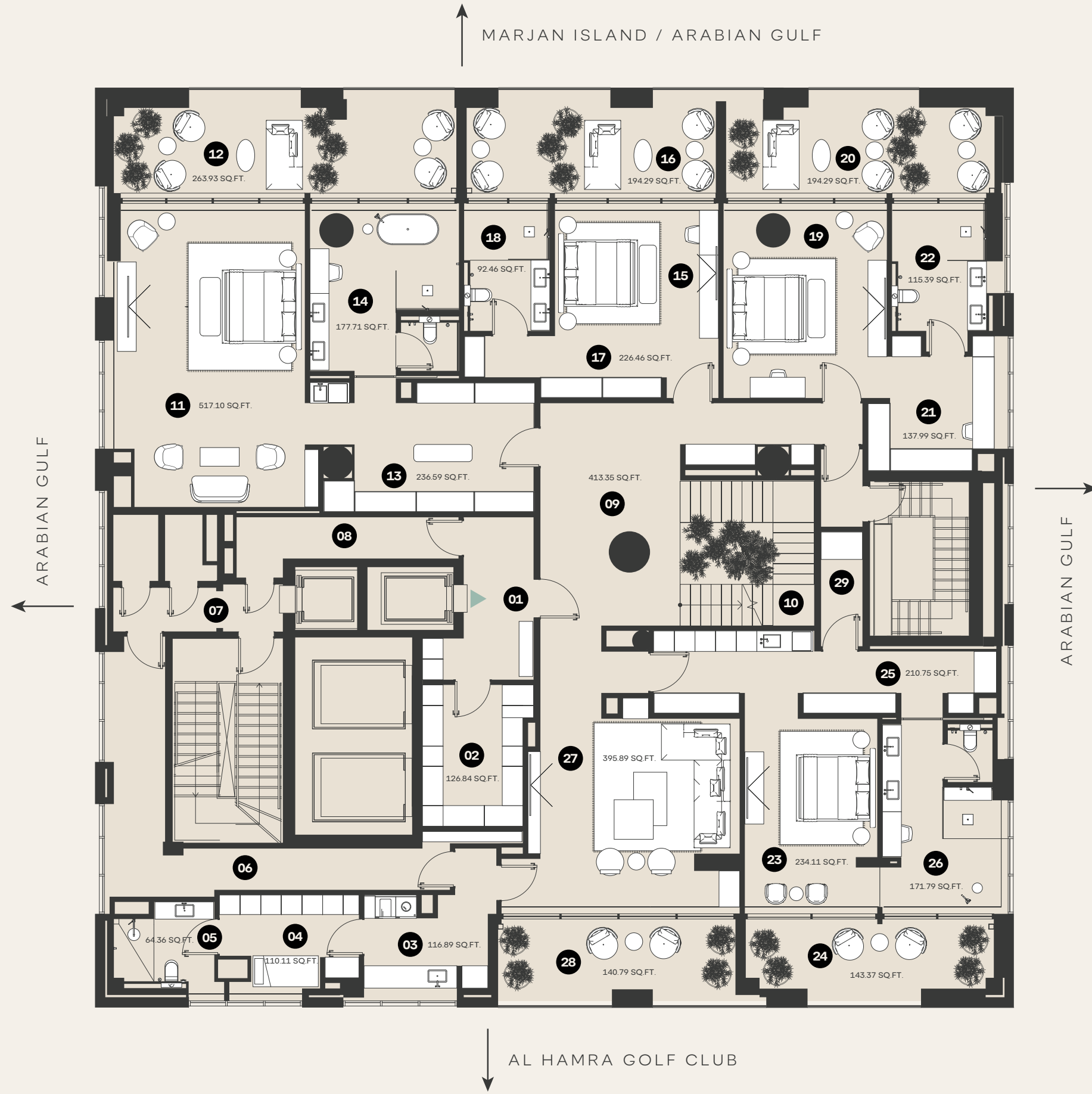
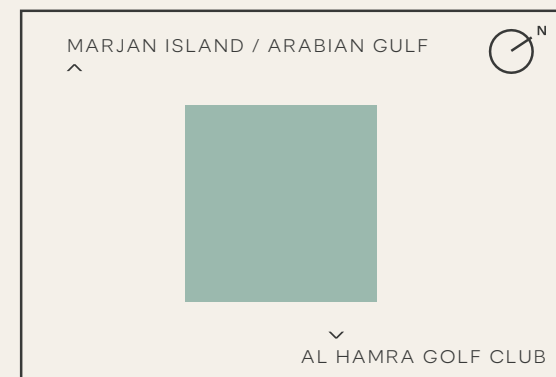
UNIT TYPE
DUPLEX

VIEWS
360 VIEWS

FLOORS
17TH

EXPLICATION OF PREMISES

- 01 FOYER
- 02 STORAGE
- 03 LAUNDRY
- 04 MAID'S BEDROOM
- 05 MAID'S BATHROOM
- 06 CORRIDOR 1
- 07 CORRIDOR 2
- 08 CORRIDOR 3
- 09 HALL
- 10 STAIRCASE
- 11 MASTER BEDROOM
- 12 MASTER BEDROOM TERRACE
- 13 MASTER CLOSET
- 14 MASTER BATHROOM
- 15 BEDROOM 2
- 16 BEDROOM 2 TERRACE
- 17 CLOSET 2
- 18 BATHROOM 2
- 19 BEDROOM 3
- 20 BEDROOM 3 TERRACE
- 21 CLOSET 3
- 22 BATHROOM 3
- 23 BEDROOM 4
- 24 BEDROOM 4 TERRACE
- 25 CLOSET 4
- 26 BATHROOM 4
- 27 LIVING AREA
- 28 LIVING AREA TERRACE
- 29 SAFE ROOM



NUMBER OF UNITS: 1
STARTING PRICE: AED 77,952,888

ARTIST RENDERINGS: the artist representations and interior decorations, finishes, appliances and furnishings are provided for illustrative purposes only. The Developer makes no representations or warranties except as set forth in the sales agreement. Developer reserves the right to substitute materials, appliances, equipment, fixtures and other construction and design details specified herein with similar materials, appliances, equipment and/or fixtures of substantially equal or better quality. Developer reserves the right to make changes in accordance with the terms of the Offering Plan. The use of any designations, labels or nomenclature is for marketing purposes only.



5 BEDROOM PENTHOUSE

TOTAL AREA
300 SQ.M. / 3,228 SQ.FT.

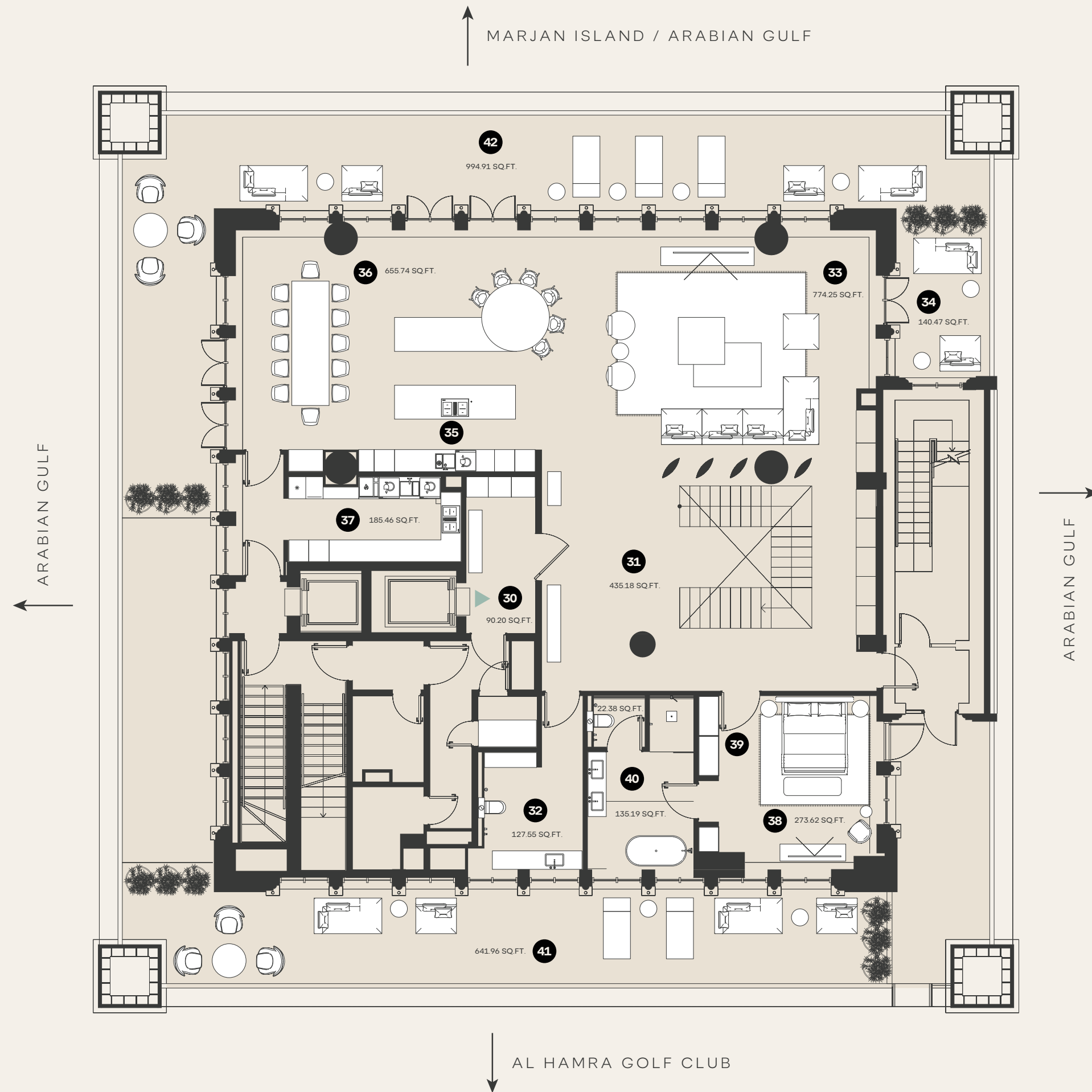
UNIT TYPE
DUPLEX

VIEWS
360 VIEWS

FLOORS
18TH

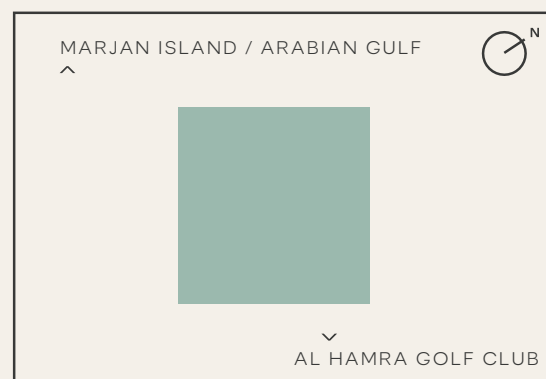
EXPLICATION OF PREMISES

- 30 FOYER
- 31 HALL
- 32 POWDER ROOM
- 33 LIVING AREA
- 34 LIVING AREA TERRACE
- 35 KITCHEN AREA / BREAKFAST COUNTER
- 36 DINING AREA
- 37 PREP KITCHEN
- 38 BEDROOM 5
- 39 BEDROOM 5 CLOSET
- 40 BATHROOM 5
- 41 PANORAMIC TERRACE 1
- 42 PANORAMIC TERRACE 2



NUMBER OF UNITS: 1
STARTING PRICE: AED 77,952,888

ARTIST RENDERINGS: the artist representations and interior decorations, finishes, appliances and furnishings are provided for illustrative purposes only. The Developer makes no representations or warranties except as set forth in the sales agreement. Developer reserves the right to substitute materials, appliances, equipment, fixtures and other construction and design details specified herein with similar materials, appliances, equipment and/or fixtures of substantially equal or better quality. Developer reserves the right to make changes in accordance with the terms of the Offering Plan. The use of any designations, labels or nomenclature is for marketing purposes only.



SKY PALACE

TOTAL AREA
303.0 SQ.M. / 3,260.3 SQ.FT.

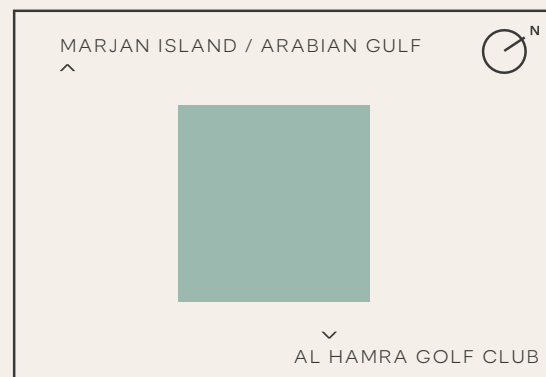
UNIT TYPE
TRIPLEX

VIEWS
360 VIEWS

FLOORS
21ST

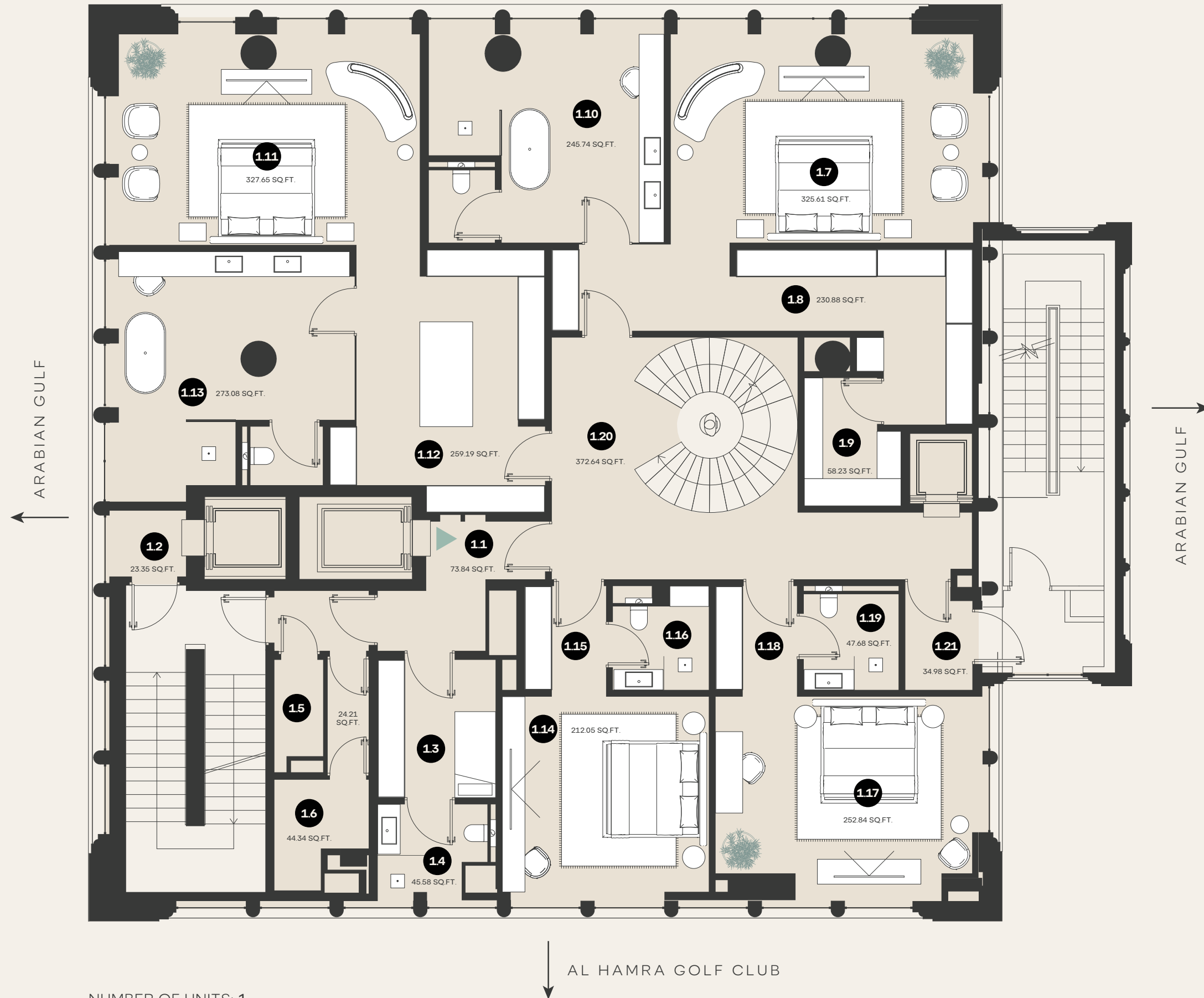
EXPLICATION OF PREMISES

- 1.1 FOYER
- 1.2 MAID'S HALLWAY
- 1.3 MAID'S BEDROOM
- 1.4 MAID'S BATHROOM
- 1.5 TELECOM
- 1.6 ELECTRIC
- 1.07 MASTER BEDROOM 1
- 1.08 MASTER CLOSET 1
- 1.09 MASTER BEDROOM 1 SAFE
- 1.10 MASTER BATHROOM 1
- 1.11 MASTER BEDROOM 2
- 1.12 MASTER CLOSET 2
- 1.13 MASTER BATHROOM 2
- 1.14 BEDROOM 3
- 1.15 CLOSET 3
- 1.16 BATHROOM 3
- 1.17 BEDROOM 4
- 1.18 CLOSET 4
- 1.19 BATHROOM 4
- 1.20 HALL
- 1.21 SERVICE HALL



MARJAN ISLAND / ARABIAN GULF

WALDORF ASTORIA
RESIDENCES • RAS AL KHAIMAH



NUMBER OF UNITS: 1
STARTING PRICE: AED 130,133,531

ARTIST RENDERINGS: the artist representations and interior decorations, finishes, appliances and furnishings are provided for illustrative purposes only. The Developer makes no representations or warranties except as set forth in the sales agreement. Developer reserves the right to substitute materials, appliances, equipment, fixtures and other construction and design details specified herein with similar materials, appliances, equipment and/or fixtures of substantially equal or better quality. Developer reserves the right to make changes in accordance with the terms of the Offering Plan. The use of any designations, labels or nomenclature is for marketing purposes only.



SKY PALACE

TOTAL AREA
303.0 SQ.M. / 3,260.3 SQ.FT.

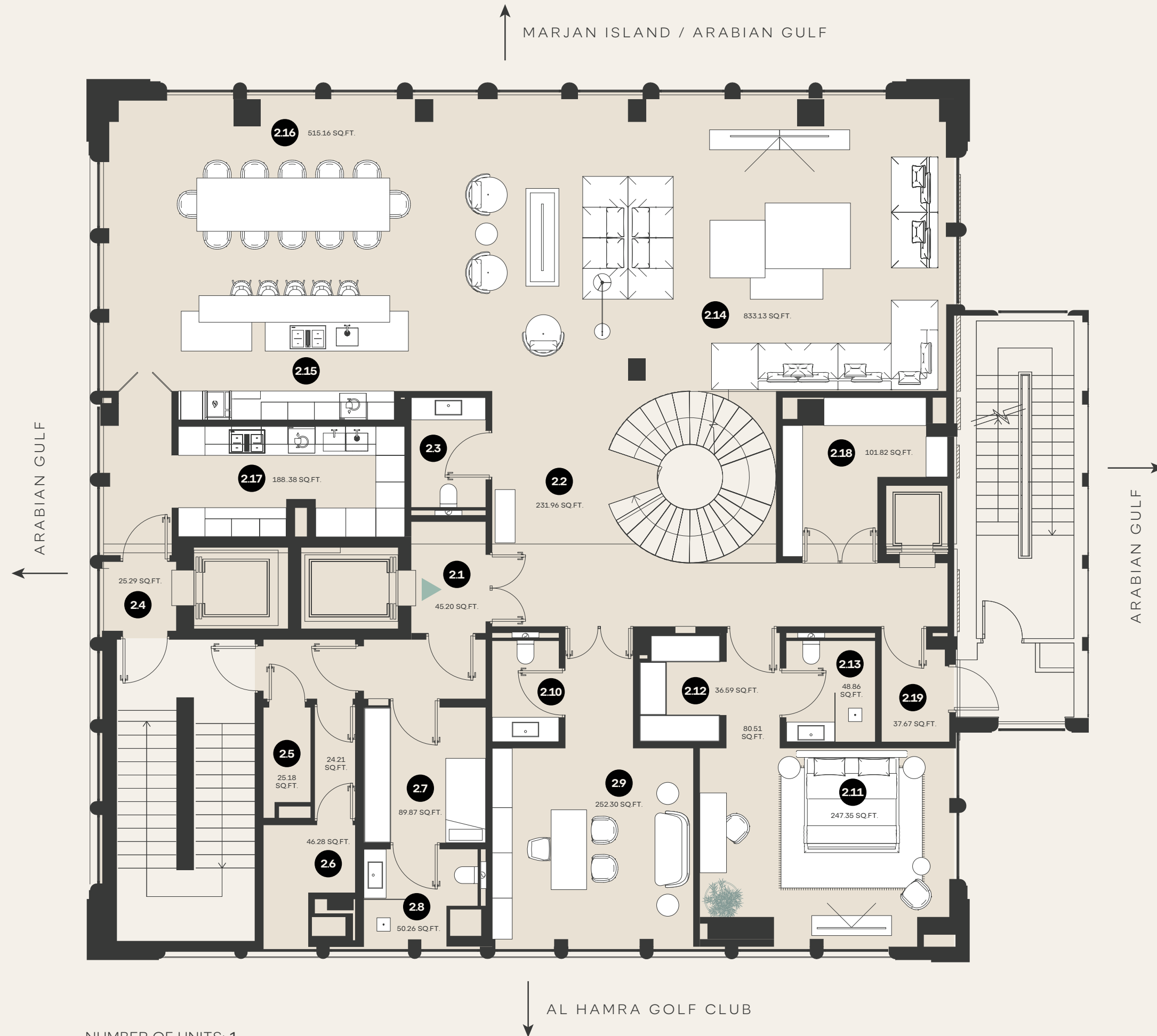
UNIT TYPE
TRIPLEX

VIEWS
360 VIEWS

FLOORS
22ND

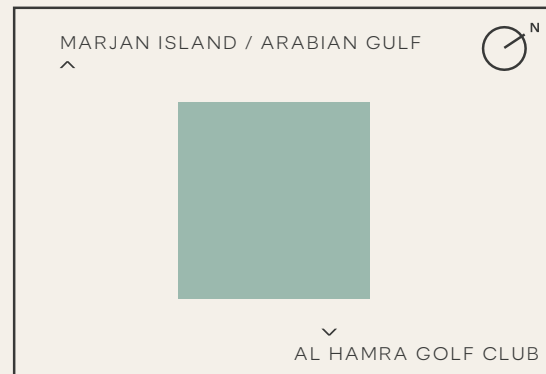
EXPLICATION OF PREMISES

- 2.1 FOYER
- 2.2 MAIN HALL
- 2.3 POWDER ROOM
- 2.4 MAID'S HALLWAY
- 2.5 TELECOM
- 2.6 ELECTRIC ROOM
- 2.7 MAID'S BEDROOM 2
- 2.8 MAID'S BATHROOM 2
- 2.9 OFFICE
- 2.10 OFFICE BATHROOM
- 2.11 BEDROOM 5
- 2.12 CLOSET 5
- 2.13 BATHROOM
- 2.14 LIVING AREA
- 2.15 KITCHEN AREA / BREAKFAST COUNTER
- 2.16 DINING AREA
- 2.17 PREP KITCHEN
- 2.18 WINE ROOM
- 2.19 SERVICE HALL



NUMBER OF UNITS: 1
STARTING PRICE: AED 130,133,531

ARTIST RENDERINGS: the artist representations and interior decorations, finishes, appliances and furnishings are provided for illustrative purposes only. The Developer makes no representations or warranties except as set forth in the sales agreement. Developer reserves the right to substitute materials, appliances, equipment, fixtures and other construction and design details specified herein with similar materials, appliances, equipment and/or fixtures of substantially equal or better quality. Developer reserves the right to make changes in accordance with the terms of the Offering Plan. The use of any designations, labels or nomenclature is for marketing purposes only.



SKY PALACE

TOTAL AREA
303.0 SQ.M. / 3,260.3 SQ.FT.

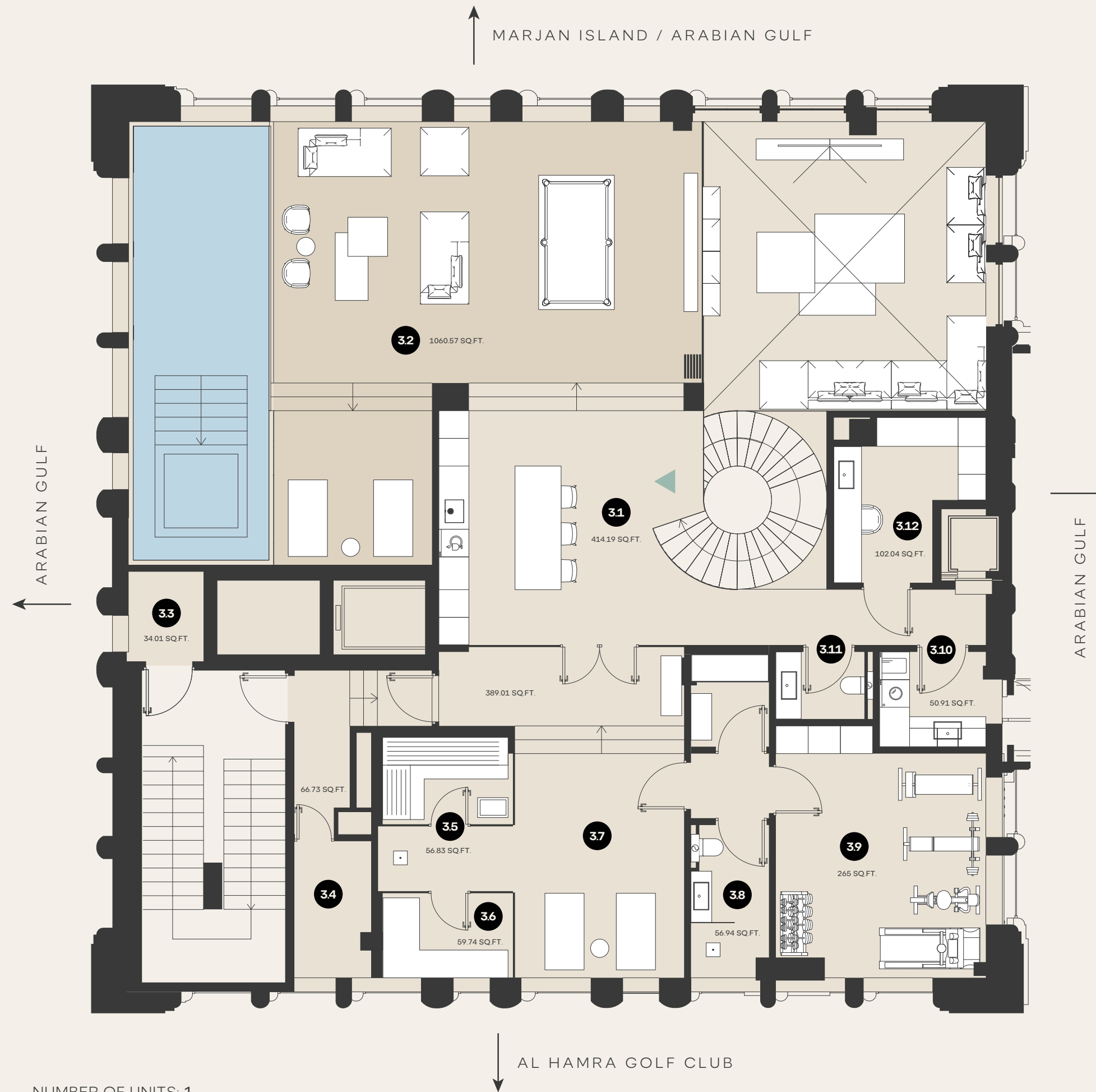
UNIT TYPE
TRIPLEX

VIEWS
360 VIEWS

FLOORS
23RD

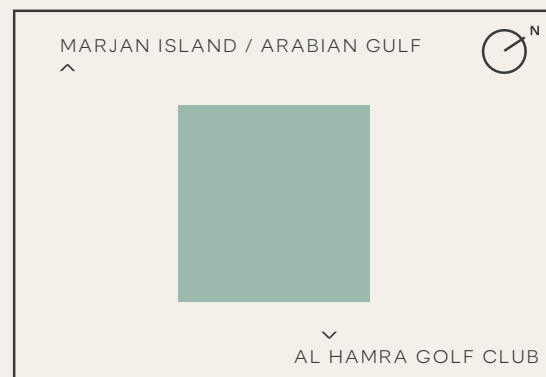
EXPLICATION OF PREMISES

- 3.1 HALL
- 3.2 TERRACE-POOL
- 3.3 TECHNICAL ROOM
- 3.4 ELECTRIC ROOM
- 3.5 SAUNA
- 3.6 STEAM ROOM
- 3.7 SPA AREA
- 3.8 BATHROOM
- 3.9 GYM
- 3.10 LAUNDRY
- 3.11 POWDER ROOM
- 3.12 SALON



NUMBER OF UNITS: 1
STARTING PRICE: AED 130,133,531

ARTIST RENDERINGS: the artist representations and interior decorations, finishes, appliances and furnishings are provided for illustrative purposes only. The Developer makes no representations or warranties except as set forth in the sales agreement. Developer reserves the right to substitute materials, appliances, equipment, fixtures and other construction and design details specified herein with similar materials, appliances, equipment and/or fixtures of substantially equal or better quality. Developer reserves the right to make changes in accordance with the terms of the Offering Plan. The use of any designations, labels or nomenclature is for marketing purposes only.





WALDORF ASTORIA®
RESIDENCES • RAS AL KHAIMAH

والدورف أستوريا ريزيدنسز رأس الخيمة

SALES PRICES

SALES PRICES

CONFIGURATION	TYPE	UNITS	VIEW	TOTAL AREA (SQFT)	STARTING PRICE (SQFT) (AED)	STARTING PRICE (AED)
2 BEDROOM	2BR - TYPE 1 - OP1	1	PARTIAL SEA	1,890	4,412	8,400,000
2 BEDROOM	2BR - TYPE 2 - OP1	4	PARTIAL SEA	2,337	4,488	10,500,000
2 BEDROOM	2BR - TYPE 3 - OP1	4	PARTIAL SEA	3,613	4,488	16,300,000
3 BEDROOM	3BR - TYPE 1 - OP1	1	PARTIAL SEA	4,326	4,412	19,100,000
3 BEDROOM	3BR - TYPE 2 - OP1	2	PARTIAL SEA	3,318	4,794	16,000,000
3 BEDROOM	3BR - TYPE 2 - OP2	6	PARTIAL SEA & GOLF	3,318	4,947	16,500,000
3 BEDROOM	3BR - TYPE 2 - OP3	1	PARTIAL SEA & GOLF	3,318	5,100	17,000,000
3 BEDROOM	3BR - TYPE 2 - OP4	1	PARTIAL SEA & GOLF	3,318	5,813	19,300,000
3 BEDROOM	3BR - TYPE 3 - OP1	15	FULL SEA	4,136	4,667	19,300,000
PENTHOUSE	4 BEDROOM	1	FULL 360	6,803	7,350	50,000,000
PENTHOUSE	5 BEDROOM	1	FULL 360	9,171	8,500	77,952,888
SKY PALACE	5 BEDROOM	1	FULL 360	9,784	13,300	130,133,531
TOTAL		38				



WALDORF ASTORIA®
RESIDENCES • RAS AL KHAIMAH

والدورف أستوريا ريزيدنسز رأس الخيمة

PAYMENT PLAN

PAYMENT PLAN

Payment Plan	Date	%
Down Payment	-	20%
1 st Installment	Jan 2025	5%
2 nd Installment	May 2025	5%
3 rd Installment	Aug 2025	5%
4 th Installment	Dec 2025	5%
5 th Installment	Apr 2026	5%
6 th Installment	Upon Completion i.e. Dec2026	5%
7 th Installment	6 months from Completion	10%
8 th Installment	12 months from Completion	8%
9 th Installment	18 months from Completion	8%
10 th Installment	24 months from Completion	8%
11 th Installment	30 months from Completion	8%
Final Payment	36 months from Completion	8%



WALDORF ASTORIA®
RESIDENCES • RAS AL KHAIMAH
والدورف أستوريا ريزيدنسز رأس الخيمة